



EVERTON NEWS

Autumn/Winter 2021

Editor—Sheila Nash



My husband, Harry & I moved to Everton Village, via Barton on Sea in January 2021. We are no strangers to the village, Harry grew up here and his father, Harold, has lived in the village for 88 years.

We moved back to the UK in December 2017 having lived and worked in Luxembourg for nearly 15 years.

My background is in Learning & Development and I'm also a Behavioural Coach, although these days I mostly use these skills as a consultant with the Teenage Cancer Trust.

I'm a keen runner and general fitness enthusiast. It has been great fun discovering new running routes, mostly getting lost following the numerous footpaths in the area. I should have read "A word from Dingle Dell" (page 28) before setting off.

I like to relax reading a good book, preferably with chocolate biscuits and a pot of tea, or something with bubbles (later in the evening) paired with a bar of chocolate. Lockdown enabled me to discover new authors, Shirley Wells, Nancy Revell, David J Gatward and J D Kidd just some of my new favourites. If I have any fellow "bookworms" in the village and you would like to do a book review column then please contact me.

I'm really excited about being Editor of the Everton News, I want to thank Cheryl for all her support and entrusting "her baby" into my hands. I know you are going to be a tough act to follow, thankfully I know where you live.....

Thank you to our amazing Yarn Bombers for giving me the inspiration for this issues front cover - I am not sure who you are, but I've seen your work around the village and it always makes me smile.

At the time of writing we are cautiously easing out of lockdown. I am looking forward to raising a glass of bubbles and meeting fellow villagers in our wonderful Social Club and also our newly opened village pub.

On the subject of bubbles and meeting people it was great to see a lot of people enjoying our village post lockdown "knees up" at the end of July. You can read all about the day on the centre pages and spot the pictures throughout the newsletter.

As we look ahead, if there is anything you want to see more of or less of in what is your community magazine then please contact me. The next newsletter will be early April, hopefully we'll have lots of village and community events to promote and celebrate.

Sheila

sheila.evertonnews@gmail.com

EVERTON COMMUNITY ASSOCIATION

Hi Everyone

I hope you will enjoy reading the first newsletter published by our new Editor Sheila, I would like to thank her for stepping in and taking over our newsletter as it is a vital item for the village, Cheryl has really been a wonderful editor and it will be hard act to follow, but I'm sure Sheila will be just as wonderful.



There will be some changes made to the ECA committee at our next AGM which will be held on **Thursday 17th September at Everton & Lymore Social Club, 7.30pm.**

Unfortunately, we have five members of the committee resigning after serving on the committee for many years. I would like to really thank them for their commitment to Everton Village. It is also time for myself to step down from being the chairperson. The good news is that we already have a new treasurer to take over and we also have Sheila on the committee now and hopefully six new members, who are eager to join. Also Cllr Carol Rook will now be our Hordle Parish representative on our committee. So the committee is going to be as strong as ever.

Now that we are able to meet up once again, I do hope that you will support the various clubs and activities that are on offer in Everton.

If you have any suggestions that would benefit our village please let us know.

Thank you, keep safe.

Pauline

Stay in touch with Community News, Activities & Events

EVERTON VILLAGE WEBSITE

www.everton-lymington.co.uk

EVERTON FACEBOOK PAGE

Everton Village Voice

EVERTON VILLAGE FESTIVAL WEBSITE

www.evertonfestival.com



Hordle Parish Council

Serving the communities of Tiptoe, Hordle & Everton

Parish Council Update - Summer 2021

Parish Office Opening Hours

The Parish Office at the Pavilion, Vaggs Lane, Hordle, has reopened to the public. Opening times are as follows: ***Mondays, Tuesday, Thursdays & Fridays 10am-12 noon; Wednesdays 12 noon-2pm.*** These hours are a minimum; if the lights are on, do drop in.

In addition, dog bags are now available to purchase from the Parish Office - only £1 for a pack of 50 biodegradable bags.

New Staff at the Parish Council

Sarah Pitt has been appointed Parish Clerk and Bob West as Groundsperson, joining Deputy Clerk Chris Halling. Sarah moves from Milford-on-Sea Parish Council where she has been for the past 7 years and Bob has many years' experience at Lymington and New Milton Town Councils.

New Website & Facebook Page



The Parish council has a new revamped website, where you can find lots of useful information about the council, from who your councillors are, meeting papers, grant application forms, local information and local links. In addition, the Parish Council has a new Facebook page where updates on Parish Council business, events and other useful local information will be shared. Just search Hordle Parish Council and follow or like us to make sure you are up to date with all the local council news.

Speed Indicator Device Heads for Hordle Parish

The Parish Council is awaiting delivery of a new Speed Indicator Device (also known as a VASLR), which will be placed on rotation at various locations around the parish. The device will record the speeds of all vehicles which pass it. It will let speeding drivers know that they are travelling above the limit by flashing a warning sign and it will also tell drivers if they are travelling at a safe speed. The information it collects will be sent to the Police and Safer Roads Team.



Bee Friendly Planting in the Parish

The Parish Council is progressing a number of wildflower and bee-friendly planting projects around the parish, including exploring the possibility of a parish-wide community meadow, potentially situated at Everton Rec, adjacent to the playpark. The Parish Council would welcome your thoughts on this. Simply drop us a line at: clerk@hordleparishcouncil.gov.uk or write to us at the Parish Office.



Replacement Playpark Kit at Everton Rec

The Parish Council has placed an order for replacement swings and multi-play unit at Everton Recreation Ground as well as new playpark equipment at the Acacia Kickaround in Hordle. The new kit is hoped to be installed in the autumn and again we will post regular updates.

Next Meetings: 21st September & 19th October.

All meetings are at the Pavilion, Vaggs Lane, Hordle at 7.15pm.

Agendas will be available from the website.

Everton's Parish Councillors

We are fortunate that 3 Everton residents are now Parish councillors, ensuring that the interests of our village are fairly represented, though all Parish Councillors work together to represent the interests of all 3 villages .

Carol Rook has recently joined the Parish Council, bringing previous experience both as a Parish clerk and finance officer in Suffolk .

Nigel Ferguson also has previous experience as a Parish Councillor in Oxfordshire , and has recently been elected Vice Chair of the Parish Council. Nigel also recently updated the Parish Council website

Rob Tarbard has now been a Parish Councillor for 3 years.

Chris Halling who lives in Everton is our deputy clerk and Maggie Hill continues as Chair.

All of this information is available on the upgraded Parish Council website , and also on our new Facebook page—search Hordle Parish Council

The Everton Lindy Hoppers

This group is meeting regularly at the pavilion for Lindy-Hop class on Fridays at 6pm for one hour. This is a not for profit class and so the cost of the hall is shared. The aim is to simply have a fun and sociable time. There is no need for a partner or any experience, just a love of music and dance.

Elizabeth who runs the class has taught dancing in London and was taught herself by the internationally famous Julie Oram

Just come along to the Pavilion at 6pm any Friday or call **Elizabeth on 01590 718792 for more information**



Whose fault is it?

It's a really nice August day outside, but I am here inside, listening to the radio and looking at my phone. There are a lot of people saying a lot of things. Presenters winding up callers, moaning on Facebook, nastiness (no nicer way to put it) on Twitter. I turn to the back page of the local paper and read the angst-ridden letters about this and that.

“It’s the council’s fault.”

Whether your gripe be the lack of HGV drivers to keep our garden waste going, whether it be the camper vans parked up summer long on our seafronts, whether it be the heavily flooded roads we've experienced lately, the building of too many houses too close to your own, the closing of so many shops on our high streets. It is definitely the council's fault, according to many of the comments I read on social media and in the paper. You could say (and some do) that these issues are a result of a lack of 'teeth', will, preparation and forethought. Or you could say that your councils (and I'm not trying to get sympathy here, councils are elected to sort out these things) are doing their very best to deliver infrastructure and services on a massive scale on very little money, in the most trying of circumstances.

“It’s Brexit’s fault.” “It’s the scientists’ fault.” “It’s the government’s fault.”

We have been through incredible times involving absurdly prolonged and acrimonious arguments. Let's start with the vote to leave the EU and all the bitterness on both sides of the argument; swiftly followed by the split in views over how we should have approached the Covid pandemic, who started it, and whether we should wear masks and carry vaccination passports. We have ongoing arguments about immigrants coming in boats from France – should we embrace them as victims or send them elsewhere? And this week, due to an IPCC report saying it is 'code red for humanity', renewed arguments over whether we should or should not be spending huge amounts of money and effort on trying to slow down climate change.

You will have your views on each of these huge national and international topics, and I have mine. I fall very clearly on one side in every case. I consciously try to understand the opposing view as well, although that's difficult, amongst the personal sniping and accusations (which is too easy to get caught up in).

The thing is, these huge topics are not going away. (They are, if you look deeply enough, all linked.) And there are no easy answers. But if we can't come to a consensus on what to do about them, we will all get caught in a whirling tornado of never-ending arguments, and never do anything of substance to solve any of them or move on. That is my worry. Or maybe these problems are unsolvable and we must make the best of it, as humankind.

Perhaps we have to accept some things are not going to be how we want them to be. And others we might... might... agree to do something about.

All I know is, collective argument, continually, every day in the news, on our computers, cannot be good for our health. It cannot be good for our general happiness. Those of us who Tweet or write angry letters to the paper every week, need to take a break. Because it's a really nice August day outside, and we are missing it, whilst we are arguing about things over which we probably have very little influence.



Cllr Fran Carpenter

Hampshire County Councillor for New Milton North, Milford & Hordle

01425-614665 / 07867-502624

fran.carpenter@hants.gov.uk



This giant mushroom was found in Barnes Close— looks like it made a tasty lunch!



Did you know?...

Mycophobia is the irrational fear of mushrooms!

And there are 72 words that can be formed out of the word mushroom— how many can you make?

Everton Pavilion

A report by Toby Sears, Chairman of the Pavilion Committee

Everton Pavilion is a resource for our community, available for hire by anyone in or outside of Everton and situated in the heart of the village. It can be reached from Frys Lane where there is a parking area or on foot across the recreation ground via Greenmead Avenue. The Pavilion is a Registered Charity (No 294875) and is managed by a committee of volunteers for the benefit of the village. The Pavilion has a community hall with a small kitchen as well as a smaller room. The hall is an ideal size for Children's parties, group meetings and small social gatherings. Look out for pop up events and charity coffee mornings including cinema events put on by the community and disabled group, open to all.

Well, it's unoriginal to say it but what a year! We have seen openings and closings, bookings and cancellations, groups closing down and new groups coming to use our pavilion. Any who felt they couldn't continue will be missed but we extend a warm welcome to the new groups. Thank-fully we were able to eventually access covid funding which helped pay our bills and fund all the signage and materials for making the pavilion covid secure. There will be a surplus which so long as we keep fairly full with hirers will allow us to increase the quality of the facilities and the access for disabled. We are being redecorated in October which was due last year but got held off while the building was covered in notices and tape! At the same time our furnishings and toilets will get a makeover to bring them up to date. Safer fire exit and front doors will help give easier and safer access for everyone coming to the building. This summer we lost ex chairman and committee member Alan Paice who has moved with his wife to be closer to family. We wished him well and presented him with a small leaving/house warming gift (see picture). Also leaving were Mel Rand our vice chairman and Jennifer Hood our treasurer and we were grateful for the time they gave us. Jenny has stayed on the committee and Linda Sears has taken over as temporary treasurer. Linda has worked with Jackie, our secretary, to get online banking up and running to help simplify our accounting and payments for any future treasurer.



Well, it's unoriginal to say it but what a year! We have seen openings and closings, bookings and cancellations, groups closing down and new groups coming to use our pavilion. Any who felt they couldn't continue will be missed but we extend a warm welcome to the new groups. Thank-fully we were able to eventually access covid funding which helped pay our bills and fund all the signage and materials for making the pavilion covid secure. There will be a surplus which so long as we keep fairly full with hirers will allow us to increase the quality of the facilities and the access for disabled. We are being redecorated in October which was due last year but got held off while the building was covered in notices and tape! At the same time our furnishings and toilets will get a makeover to bring them up to date. Safer fire exit and front doors will help give easier and safer access for everyone coming to the building.

This summer we lost ex chairman and committee member Alan Paice who has moved with his wife to be closer to family. We wished him well and presented him with a small leaving/house warming gift (see picture). Also leaving were Mel Rand our vice chairman and Jennifer Hood our treasurer and we were grateful for the time they gave us. Jenny has stayed on the committee and Linda Sears has taken over as temporary treasurer. Linda has worked with Jackie, our secretary, to get online banking up and running to help simplify our accounting and payments for any future treasurer.

2020 proved it's hard to plan ahead and as I am writing this in June I am somewhat concerned at whether anything I say is going to happen will actually come to pass or perhaps get postponed but in September we welcome new yoga classes from the University of the Third Age, plus hopefully the Art and Dance classes will be restarting. The petanque court has been re-surfaced with help from Hordle and Everton Parish Council and we have had the access for the court levelled up. What might not be well known is we also have a smaller room available, plus storage, which we are keen to develop and improve. Ideally suited to beauty practitioners or small businesses needing a meeting room, this can be hourly, daily or weekly.

Please see the back cover for scheduled activities at the Pavilion

Looking for a local venue?

HIRE EVERTON PAVILION



Main hall is 8.5m long by 6.3m wide (28 foot by 21 foot), with a small kitchen. The hall is an ideal size for Children's parties, group meetings and small social gatherings. The hall opens on to a patio enclosed by a picket fence. A second smaller room is available for social or business hire. Storage available. Contact Toby Sears evertonpavilion@gmail.com 01590 644269 for prices, availability and bookings



Everton Ramblers

The aim is to provide two walks a month, starting at 10.30am covering approximately 5 miles and finishing between 12.30 to 1.00pm. We will sometimes stop for a pub lunch at the end of a walk. There are also evening walks in the summer usually from Forest pub car parks.

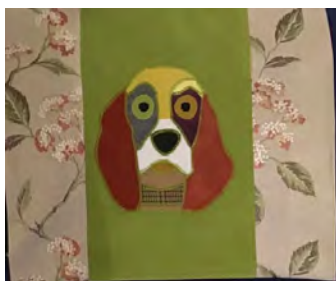
The annual subscription is £10 which enables member to join the walks, as well as self funding social events during the year.

Anyone interested in joining us please contact **Tony Shonfeld 01590 718516** or email joshonfeld@aol.com

LOCKDOWN—COMMUNITY TALENTS AND GOOD WORKS

I think we would all agree we could have lived without a Pandemic and its consequences. However, sometimes these interventions provide us with the opportunity to hit the pause button, to take stock of our lives and revisit what is truly important to us. This statement in no way diminishes the consequences of the pandemic that have been faced by local businesses and individuals.

Within the village we have had amazing people who have stepped up, helped in the community, sewn facemasks and hospital gowns, mentioned in last years issue of Everton News. And now as we are finding our way out of lockdown and restrictions and life goes back to the “new normal”, we need to hold on to the community spirit and resilience that got us through.



Sewing for the NHS

After sewing for the NHS, Jan Vickery moved into home furnishings, notably cushion covers.



Brave the Shave

Jan also “Braved the Shave” in memory of her Dad. The “shave” was undertaken by local hairdresser Jason Jones and took place at The Crown Inn on 7th August. Jan raised over £2000 for the MacMillan Cancer Charity



Postcards of Kindness



Eight year old, Violet Long joined a Facebook group "Postcards of Kindness" here she tell us a bit more about the group

During the first lockdown, my mum came across a group on Facebook called "Postcards of Kindness". It's a group where nursing homes and other types of residential homes can sign up with their addresses and you can then write postcards, make cards or send small things for the residents to enjoy together.

In the beginning I started sending two or three cards each week and never really expected to receive any replies. However I did start getting letters from residents who told me how nice it was to hear from me and how lovely it was to hear about what I was doing for my home schooling and the fun I was having during lockdown.

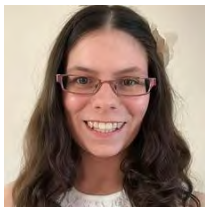
I liked knowing that I was making people happy so I started sending off more. My mum bought me a map of the country and now, every time I send a letter, we find the town it's going to go to and Stick a pin in the map.

I've now sent over 300 homemade cards and postcards and I will keep sending them because I think it's nice to do something for other people that makes them happy and not feel lonely if they don't have any family of their own.

If you'd like to send a card like I do, find the group on Facebook. I'm sure the people who live in the homes would love to hear from you.

Note from the Editor - it is great to see the enthusiasm Violet has for writing her postcards and I am sure everyone would like to enable her to continue her hobby, therefore, if anyone has any old notecards or postcards that they're not going to use and may help to start conversations, please email me sheila.evertonnews@gmail.com and I'll contact Violets Mum.

Local Author Becky Bishop



Local resident Becky Bishop has published her new collection of Poems, "Hope can Always be Found". Becky will be having a book launch for all her books on **11th September at 10.45 in St Mary's Church Hall**. To find out more about Becky's work and her publications, see her website <https://beckyspoemsandbooks.wordpress.com>

EVERTON POST OFFICE AND VILLAGE STORES



Hello Friend's and Neighbours,

It is now the beginning of July and we have just celebrated five years of owning the shop. Time has flown by and although some of it has been testing especially this past year, we are still extremely happy here and look forward to more years spent living and working in this great community.

Everton is a lovely place to live and we hope that all of you that have moved here during the past year will be happy here and are being made to feel as welcome as we were.

The weather has been very unpredictable but rain or shine the shop is well stocked with summer essentials. All the things you need for a great BBQ, steak, chicken, sausages, burgers, rubs, seasonings and of course charcoal. If you are entertaining or just like us enjoy quality food, there is nothing better than local produce, smoked trout pate (as seen on tv), Lyburn cheese, fishcakes, mackerel pate, game, eggs, chicken, I.O.W produce, tomatoes, cheese, cherries, chutneys and sauces including new pizzaiola and makhani sauces from the tomato stall. Strawberries, raspberries and blueberries from our favourite New Forest Fruit Company make great desserts and go well with New Forest Ice cream. A good selection of New Forest Chocolates make a nice treat or lovely gift. Mangetout catering meals and delicious desserts are all prepared frozen for last minute dinners and guests. Barries favourites are the treacle tart, roulades and brownies, but to be honest he enjoys them all!!

Cheese boards and coffee are made even nicer by having locally made biscotti and New Forest Shortbread.

For your canine companions we have in stock Bare Nutrition healthy dog treats and biscuits, which I am sure our new family member, Bella, will get to try very soon. Bella is not the only new puppy in the village, she has three siblings in Wainsford Road, two sisters and a brother. When we can all take them out for a walk, meeting up around the village will be interesting and I am sure it will add time to our walkies!

With the summer comes winter ordering for us and yes that means Christmas! Sorry to mention the C word so early but we have to start our orders in July and try to predict what we would all like on our Christmas table. I have tried to channel my inner witch but to no avail, so anyone with a spare crystal ball to lend us, it would be much appreciated.

At the end of last summer Chris, one of our customers, told us about a post box from Everton that was coming up for auction in Lymington.

The box turned out not to be a traditional in the wall box but one that used to be fitted in the window of Everton stores. Barrie and I thought it would be a good idea to bid on it and bring it back home to Everton. We were successful and now own a metal fronted, wooden backed post box from the 1920's King George V era. Since we collected our post box it has been sitting in the cottage wrapped up. We would like to invite those of you with more imagination than us to come up with some good suggestions for its use and home, putting it back in an UPVC window is not an option!



We would like to thank all of you that have been donating items to the New Forest Food Bank since we became a drop off point, this is a worthwhile service and is unfortunately needed in these difficult times. Every item is appreciated and makes a difference.

Many thanks to Rob and Frank for your continuing support and to all of our customers and friends.

Best Wishes Carole, Barrie and Emma.

EVERTON POST OFFICE & VILLAGE STORES

01590 643055

Shop and Post Office services available

7am-7.30 p.m. MON- SAT

7.30-5 .00 p.m.SUN.

We are proud to stock produce from over 20 local suppliers

- Stockists of Lyburn and L.O.W Cheese
- Locally sourced fresh meat from the New Forest Bacon company
- Stockists of New Forest Newhouse Game
- Stockists of Catch Fishcakes
- Local bakery bread delivered daily
- Wide range of groceries, fresh fruit and vegetables. Local New Forest seasonal fruit
- Regular promotions of wine and beer
- Stationery and a large selection of greeting cards



Everton & Lymore WI 1922 - 2022

It is exciting to begin to believe that life may be getting back to normal. I am sure we are all looking forward to planning some time away for a change of scene, or maybe a visit to family or friends that has not been possible during the last 18 months.

The WI is also looking forward to getting back together and

resuming our regular meetings and diary of events. 2022 marks our centenary and we have booked some amazing speakers and we are putting plans in place to celebrate in style. Two outings are being planned and a chance to meet again with other friends from our Lymington Group of WI's. Hampshire Federation also have great programme of events and training opportunities lined up for 2021/22.

There is always a very warm welcome extended to all new members, where they can find something for everyone in the WI.

We are not just about jam and Jerusalem (although it does still have its place!). The modern WI is a democratic, social, and educational charity that gives members the opportunity to build new skills, make new friends and be inspired. We encourage everyone to take part in a wide variety of activities and to campaign on issues that matter to them and their communities. Since we have been able to meet again in groups of six, we have enjoyed a variety of activities. The photos are of some members enjoying an Air-Dry Clay

Workshop.



Why not consider joining in and help us celebrate the first 100 years of continuous membership in Everton Village?

We meet at St Mary's Church Hall, the third Wednesday of every month at 2.30pm. If you would like more information, please ring me on 01590 642672 or email evertonpres@hampshirewi.org.com

Our wonderful WI ladies kept us fed during our "Knees up" on the Rec!



CHANGES AFOOT FOR EVERTON LEGS!

Everton Ladies' Evening Group (LEGS) anticipates resuming its monthly programme and we look forward to welcoming you back again. As usual we can be found at St Mary's Church Hall in Old Christchurch Road, but we have decided to move to the first Wednesday afternoon of each month, from 2 – 5pm. We hope these changes of day and timing will be convenient to everyone, and perhaps also appeal to any new ladies who have been reluctant to venture out in the evening, especially in the wintertime.

Events kick off with Auctioneer Peter Raw on Wednesday 6th October when he will be presenting a quirky Antiques Quiz, and on Wednesday 10th November entertainer Shelley Lozano will tell us about her varied life "From Cabaret to Conservation".

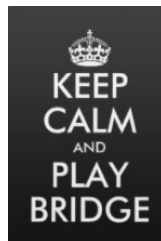
Entry is £3 to include tea and biscuits, and all ladies (of all ages) are welcome to attend. It's a great way to keep up with old friends and, if you are new to the area, it's a great way to meet your neighbours and make new friends. Do come along!

Our monthly programme is always displayed on a poster at Everton Post Office, or you can ring Carrie on **01590 644252** for details. Better still, get your email address on our mailing list and then you'll be sure to know what's coming next to Everton!

CARRIE KAYE

Everton Bridge Club

We normally meet at around 6.30 pm in St. Mary's Church Hall and guests or visiting players are always welcome. Except for the 1st Tuesday in each month when we have our Ladder Pairs competition, we run a host system that means we can even accommodate single players looking for a game on most occasions. Obviously, starting our Bridge year in August will involve some logistical difficulties, so we would ask all members, guests, and visitors to bear with us while we get our usual processes back in place.



We are all looking forward to the day we will be able to declare the Club open as normal. If, you are interested in coming along to meet us as a visitor or even prospective member, you will find all our details on our web page at www.bridgewebs.com/evertonbc/. There is an e-mail contact via the web page or please feel free to contact Eve Ritchie-Fallon on 01590 676528

The Everton Lindy Hoppers

This group is meeting regularly at the pavilion for Lindy-Hop class on Fridays at 6pm for one hour. This is a not for profit class and so the cost of the hall is shared. The aim is to simply have a fun and sociable time. There is no need for a partner or any experience, just a love of music and dance.

Elizabeth who runs the class has taught dancing in London and was taught herself by the internationally famous Julie Oram

Just come along to the Pavilion at 6pm any Friday or call **Elizabeth on 01590 718792 for more information**

News from St. Mary's

A warm hello from us all at St Mary's

At the time of the last Everton newsletter we had faced months of lockdown and were experiencing a period of less stringent restrictions. We hoped this heralded the return to some sort of normality.

Since then we have had further lockdowns. Latterly we were able to open the doors again for live service with very restricted numbers, which remains the present situation. All are welcome but please book with Gillian or the wardens [numbers at the end of this article]

On Christmas Eve our families met for an outdoor, socially distanced, family bubbles Nativity! Not an easy task to achieve but it certainly proved to be the highlight of our year. We had bicycle racks transformed into camels, sheep ran amok and the donkey lost his tail. It was certainly an occasion to be remembered and maybe even set a precedent for future years.

Our former stable had not weathered well in the copse and it was a truly unexpected surprise to arrive at church to find that Ben Haley had, without our knowledge, made a beautiful new one. We are so grateful to him and know it will be appreciated for many years to come.



In January ,after a long wait, our porch roof was fitted with new shingles and is looking really smart . .

On Easter Day two congregations were able to worship together with the service from the church relayed to the hall. A final triumphant hymn together outside was very special on a very special day. This was also an occasion when we as a church family were able to thank Gillian for her total dedication throughout our interregnum and this unprecedented pandemic, not only to us but to the whole community of Everton. Later that day our families were able to come to make Easter gardens.

Zoom services were introduced, and have been much appreciated. We will be continuing these services once a month until December so please ask for the link if interested. .

Whenever the church has been open we have been blessed by Jan Morris's beautiful flower arrangements .

The church has not been open for private prayer but please contact Gillian or the wardens should you wish to go in to prayer..



Weather permitting, we have held services outside behind the church. Sometimes we have donned our long johns and woolly coats and at other times have sought the limited shade but they are special times as we can sing!



Our families have continued meeting each month outside. This has at times been a challenge but has also inspired us to new possibilities which can be achieved with some imaginative planning. Come rain or shine we end with a picnic tea. We welcome new families who would like to share these Christian based activities.

Our lovely hall has had to be closed for long periods but we are now able to welcome back all our hirers..



Our biggest news this year is the arrival of our new Priest in Charge [vicar], Tasha Anderson, after many delays due to Covid restrictions. We are delighted to welcome her and know she is anxious to meet as many people as possible as she embarks upon her ministry here. Once we return to some form of normality and new routines can be established I know she will soon become a familiar face of St Mary's.

This is an opportunity for new beginnings with fresh challenges to embrace. We give thanks to God for this and pray for strength to overcome the fear and anxiety that has been so prevalent during the pandemic as we look ahead to an exciting future changing and adapting to new situations.

Enjoy the rest of the summer, keep safe and well

Myra Campbell Vera Peters Churchwardens

Telephone numbers for contact: Myra 643615, Vera 642981
Gillian Peard [Licensed Lay Minister] 644739

Table Tennis Club

We have been playing with all the Covid guidelines in place since the Church hall reopened in May. As we could only use one table we have had an afternoon and an evening group.

If you are interested in playing Table Tennis please contact me and I will tell you the latest situation with the Club

Friendship Coffee and Friendship Lunch club

Obviously neither of these groups has been meeting for the last 16 months but we hope to gradually reopen when it seems really safe to do so. We will try and contact all our regular members as we return to more normal activities

Contact: Gillian Peard 644739. for both table tennis and Friendship coffee & lunch club

Festival News 2021

'Knees up on the Rec!'



July 12th and I'm sitting here looking out at the rain again...there's news of a heatwave starting this week...and if it does will it still be with us on the 31st? Even the Rain man couldn't tell us. What a year of maybes, of ifs and buts and the crazy swings and see-saws that we all seem to be unable to jump off.

Like so much of this year none of us have been able to plan anything with confidence. And it was exactly the same with this.

The idea of trying to have just one single day for Everton to get together this Summer came to the Festival Group earlier this year, we thought the Village would appreciate the chance to see old friends, make some new ones and have well...a bit of a 'Knees up' on the Rec. But, back then and only six months later it's hard to believe, even setting the date filled us with trepidation. There were so many hoops to jump through. We knew we had to be out of Lockdown, the rules just wouldn't let us hold a Field event safely. But when was that going to happen? We were in and out of Lockdown most of the time...Talk about two steps forward and one back, or was it the other way round?

And then the situation did seem to be more settled. The road map was drawn up and a date set. June 21st...remember that? So seizing the day, we began to plan.

We are a fairly ancient but a very wise Committee and so just to be sure we set the date for a month later, July 31st...phew! And then to be even safer (and even wiser) we went for a plan, which was only a simple plan, in case we had to cancel anyway.





I've said before that "Evertonians" are made of stern stuff and this has been shown by the brilliant and efficient WI who stepped in and took charge of cakes and teas and all sorts, then the terrific Everton and Lymore Club joined in and offered to sort out a 'beer tent'...hmmm. It turned out to be lucky too that Steve Adams was on hand to

cajole Empty Frets and twist the arms of his musical friends to organise the music and entertain us.

Well, it's hard to believe that we are almost there because right up to a week ago it was still touch and go...but now it looks all set...'weather dependent of course' someone whispered and we all groaned...



YES WE DID HAVE IT... YES IT WAS GREAT FUN...AND YES IT DID RAIN AND YES WE DISCOVERED THAT THE GAZEBOS ALL LEAK!!

A massive thank you to Cheryl, the committee and everyone who made our village "knees up" an incredible day.



HERE'S TO NEXT YEAR!

Everton & Lymore Social Club

WELCOME BACK!

Our Club has been here in one form or another for 100 years, and we welcome New Members including lapsed Members. We also do a Guest Membership for those on holiday or anyone wishing to visit us, and are CIU Affiliated having a secure entry system with Inter-com.

We have 2 Snooker Tables(60p for 1/2 hr), a Pool Table (40p a game), Dart Board, Gaming Machines, SKY TV and Free WIFI. We also have Live Music on most Saturdays and the Hall is available to Members.

Yearly Events include the Pumpkin Day, Christmas Draw, Pensioners Party, Christmas Eve and New Years Eve Dance Party. Club outings, Table top and Craft sales, and Charity Events. Bingo nights are Wednesday and Sunday, starting at 8pm.

We offer a comfortable Meeting Place and very competitive prices on all drinks including Tea and Coffee.

Our opening times are :-

Mon-Thurs 12.30-1600 & 1900-2300

Fri-Sat 12.00-2300

Sunday 1200-2230

"Knees Up" Beer Tent



Should you wish to contact us, please ring **01590 643865**.

Also look us up on Facebook (Everton&LymoreSocialClub).

We look forward to seeing you.

SALES



M.O.T



i10 i20 i30

PLEASE GIVE RECEPTION A RING FOR MORE INFORMATION ABOUT OUR BUDGET SERVICING
Old Christchurch Rd, Everton, Lymington
Tel: 01590 642235

How do our ears work?

The pathway of hearing is complex. Our ability to hear depends on a series of sophisticated steps that change incoming sound waves in the air into electrical signals, the language that the brain understands.

The outer ear collects sound waves, it is conveniently funnel shaped directing these sound waves through a narrow passage approximately 24mm in length called our ear canal. At the end of the ear canal is the eardrum. In response to these incoming sound waves, our eardrum vibrates which in turn vibrates three tiny little bones in our middle ear, known as the ossicles - malleus, incus and stapes. The ossicles amplify the sound vibrations across their length and to the stapes which is the third of these ossicles and also the smallest bone in the human body. The vibration along the ossicles pushes on the oval window and drives fluid within the cochlea.

A normal cochlea is filled with fluid and there is also an elastic partition separating it into an upper and lower part. This partition is called the basilar membrane because it serves as the base on which delicate hearing structures sit. So as the middle ear ossicles vibrate, they displace the fluids in the cochlea causing a ripple effect along the basilar membrane. Sensory hair cells sit on top of the basilar membrane and as each hair cell moves up and down, they bend and change in structure releasing chemicals into the cells and creating electrical signals. The electrical signals that are generated are sent to the hearing nerve which then carries the information to the brain. The footprint of each sound we hear is stored in our memory bank ready to create responses both physical and emotional.

When we think of this impressive, sophisticated and intricate journey it makes it easier to understand why we don't simply hear with our ears, instead, our ears collect and transfer sound across its pathway. They translate the incoming sound information into a language that the brain understands. And it is the brain that interprets the sound and enables us to 'hear'.

By Catherine Mills Msc -Audiological Scientist



Hearing and Ear Care Specialist
at The Wessex Clinic

Ear Sense

 www.earsense.co.uk

 07814 822 631

 info@earsense.co.uk

Painting Portraits In the Pandemic



When the first lockdown brought much normal life to a halt, an initiative was created by portrait artist Tom Croft in response to the pandemic, to show appreciation for the sterling work that we saw frontline NHS staff performing on a daily basis in their jobs. To capture and record their bravery and heroism he offered to paint a portrait for free to the first NHS keyworker who replied to his online post of the offer. His offer was overwhelmed with replies and other artists, including myself, joined the initiative to offer to paint more portraits – #portraitsforNHSheroes was born.

I was delighted to be able to paint the portraits I have done for the NHS workers who responded to my offer of a portrait, and just recently completed

another.

The responses back from those receiving the portraits has shown how much this idea and physical 'thank you' has meant to people; these are some of the comments I have received

"I've just had the delivery of the painting! It's the most incredible thing to receive and to see. Thank you so much for doing this."

"Sam is bowled over by the portrait and has acknowledged how hard this pandemic has been working in the NHS, but also on life as a family. To see the joy in her daughter's face when she saw the portrait has really made Sam happy. Thank you so much. A true illustration of how wonderful the portraits for NHS heroes project is."



Some NHS workers chose to have their portraits painted showing the PPE equipment they had to wear during the course of their shift. Painting a portrait where the main or only facial feature you have are the eyes is certainly a challenge and different to a traditional portrait, but it has been an absolute pleasure and privilege to paint those portraits and be able to show appreciation of our NHS workers in this way.

Heather Jolliffe

Painter and art teacher Art in Everton on Mondays mornings

www.heatherjolliffeartist.com

HEATHER'S ART SESSIONS

- WEEKLY ART SESSIONS IN EVERTON AND LYMINGTON
 - Individual one to one art tuition
 - Art workshops
- Sketching Out Sessions at lovely local locations – Setley Vineyard coming up!



For more information
call Heather on 07545 973870 or email at
hjolliffeart@gmail.com
www.heatherjolliffeartist.com



Acacia Cottage B&B

1 double and 1 twin room
Iris and Richard Slee

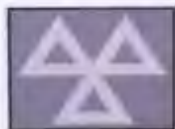
88 Wainsford Road,
Everton SO41 0UD
01590 641495

iris.slee7@gmail.com

Thank you to all our
contributors and
advertisers, without you
there would not be an
Everton News.



AC
MOTOR SERVICES LTD



Units 8&9 Lea Green Farm,
Christchurch Road,
Downton, Lymington,
Hampshire SO41 0LA

Tel/Fax: 01590 645999

Are you scrutinising every line and
wrinkle on your face?
DON'T PANIC - CACI could be the answer!

CACI non-
surgical
treatments that
tone, lift and
Re-educate the
muscles in the
face and body,
smoothing away
fine lines and
wrinkles also
helps prevent
sagging skin.



Reejuvenateuk

Call Marie on

07974 379231

Based in Hordle

Visit www.reejuvenate.co.uk
for a full list of CACI treatments

CACI
COSMETIC APPLIED COSMETOLOGY

**Oakhaven Giving,
A cup of coffee that makes a
Difference**



Oakhaven is there for those in our community facing the end of life, providing exceptional care to patients and their families during the most difficult of times.

It has been a challenging year and as we look to the future we want to ensure that Oakhaven is there for many years to come, would you consider donating £3, the cost of a cup of coffee each month, it's a small sum that could make a big difference if everyone in our catchment were to sign up. For further information and to sign up visit www.oakhavenhospice.co.uk/regular-giving



Help families in the future by leaving a gift in your Will

Perhaps Oakhaven could be part of your future planning, you may not be aware that one in four of our patients are cared for by gifts in wills, would you consider leaving us a legacy to help secure our future. Further information can be found at www.oakhavenhospice.co.uk/legacy



making every moment matter

Everton Nurseries

Hello to you all.

It's been a challenging time. In spite of Lockdowns, Social Distancing and other Covid measures to cope with, the garden centre has been able to remain open and give everyone a little bit of normality and keep your gardens going. Thanks to all of you who have continued to visits over the past months.

Getting supplies into the centre has not been all plain sailing, what with covid and the new post-Brexit regulations for imports, but with our nursery still functioning normally Christine and her team have been able to keep you all supplied with plenty of goodies

Sadly we have had to keep Camellias closed for much of the time, the staff there being very frustrated to be furloughed for over 9 months within the last year and a bit. Let's hope that with more and more of us getting double vaccinated and with the easing of restrictions we can move forward to more predictable times.

We are sad to miss out on hosting any Festival events for a second year, and look forward to next year, not least for the Festival, but because 2022 is Everton Nurseries' centenary year. We are planning a series of events to run throughout the year and some lovely special 100 year anniversary products. Keep an eye open as we go into the winter for more news about this.

As always, we send you all our best wishes and look forward to welcoming you anytime.

The Team @ Everton Nurseries, Garden Centre and Camellias



EVERTON NURSERIES
Garden Centre

The New Forest's leading centre, offering you quality and choice of **Trees, Shrubs and Hardy Plants** homegrown on our own 25 acre nursery.

Always a wonderful selection of **Trees, Shrubs and Perennials** on display.
Come and enjoy some tea or coffee with a delicious homemade snack or meal and browse our lovely garden centre.

Subscribe to our monthly newsletter on our website so we can keep you up to date.

www.evertonnurseries.co.uk • 01590 642155
We are at **EVERTON**, near Lymington SO41 0BF
Garden Centre Open: **Mon – Sat 9am – 5.30pm | Sun 10am – 4pm**
Camellias Open: **Mon-Sat 9am – 4.30pm | Sun 9.30am – 3.45pm**

The advertisement features a green border with illustrations of yellow and white flowers. On the right side, there is a vertical strip of five small icons: a pair of scissors cutting a plant, a potted plant, a watering can, a shopping cart, and a door.

Hordle Flower Club

Making a Christmas Table or Wall Wreath

You will need:

- ◆ Clematis or a similar vine
- ◆ Ivy trails
- ◆ Fir Cones – small to medium
- ◆ Holly, Spruce and/or berries – small sprigs
- ◆ Ribbon, brightly coloured or gold with width 1.5-2cm (half-1 inch)



Step 1: Cut 2-3 metres of Clematis and remove foliage, coil into a circle with a diameter of approximately 20-26cm (8-10 inches). Continue coiling by wrapping vine over and under original circle, finishing by tucking in the end stem from the outside to rest on the inside.

Step 2: Ivy trails are then wrapped over and around the circle starting and finishing with the stems tucked into the weave.

Step 3: Wrap the ribbon over and around the wreath, leaving enough to finish with a knot or a loop if you wish to hang it up.

Step 4: Add fir cones by wiring onto wreath, here's how:

To wire a fir cone – using 30cm (11-12 inch) lengths of medium gauge wire*, bent in half. Place the bent loop around a scale at the base of the cone. Taking 1 leg of wire, continue weaving around the scales, using an “over and under” technique around the base. When the 2 end wires meet up, twist them together to make 1 thicker leg. This leg is then twisted around a stem of the Clematis to attach the cone to the wreath.

*This wire can be bought in small packs from some garden centres



To complete the wall hanging an additional bow can be made with wider ribbon and tied or wired to hang from the lower section of the circle. Small sprigs of holly, spruce and/or berries can be pushed into the weave of the wreath, if being used on a table, or wired onto the wall wreath. The complete the table decoration the centre could be filled with a large candle or 3 different sized candles or a shallow glass bowl containing floating candles.

Denise Gibb, Secretary, Hordle Flower Club

Hordle Flower Club meet at The Pavilion, Hordle on the 2nd Wednesday of the month at 7pm and visitors are most welcome. Further information can be obtained by ringing me on 01590 642804

Online Video Call Popularity Explosion

During the COVID lockdown, video conferencing and remote dial in have become buzz phrases for users that had never considered using such technology earlier this year. Tools such as Microsoft Teams, Skype, Zoom, WhatsApp and others have been eagerly installed and set up to enable you to speak with friends and family across the world.

I'm not a fan of signing up for things unless absolutely necessary and in this landscape of Data Protection and lost/stolen account details it's really a matter of time before any one of the big organisations behind these tools, reports another incident of lost or stolen data.

Jitsi Meet To The Rescue

I discovered Jitsi Meet (<https://meet.jit.si/>) a few months ago and I've been using it successfully on my laptop, mobile phone and desktop PC. What I think is special about Jitsi Meet is that they don't ask you to sign up to anything, you simply create a new meeting room and invite people by sharing the link to the room. It integrates with your Webcam and Microphone on request, allows you to optionally set a secure password on the meeting room, and also share your screen with other meeting members. There is also a recording feature that uses an integration with Dropbox to save the entire call as a video file for you to watch or share later. Cool!

Its even easier than Skype as you also don't need to install anything as it's all done in the web browser. How great is that!!!

There are installable apps for the mobile devices too but these are freely available and you can still use your mobile phones browser if you wish, it just seems to work (and again without having to create a Jitsi account) on the respective app stores.

Android: <https://bit.ly/3xnbJgt>

Apple: <https://apple.co/3xqb8KW>

I'm not affiliated with Jitsi Meet, but I love it so much that I wanted to share this. I now use it with friends and family as well as for my home run business when needing to talk to clients or share a screen.



NEWFORESTPC

PC & Mac Software and Hardware
Repair Specialists

IS YOUR COMPUTER BEHAVING BADLY?

Many issues can be solved quickly and
cheaply with one callout.

We are a local company based in Everton,
Lymington

tel: 01590 700 125

web: www.newforestpc.co.uk

email: help@newforestpc.co.uk

A word from Dingle Dell...

The recent restrictions have made most people remain closer to home, there may have been a chance to explore some of the footpaths which are in this area. The footpath as we know it came into being in 1949 with the Countryside Act of that year; however there have been unofficial paths which have been used to go to work, church or market for many hundreds of years.

In Everton there are several paths close by. The first runs from the corner of Wainsford Road, starting where it curves and leads off to Pennington. This path, continues past Batchley Farm and goes on to Silver Street, where it continues over the main road to emerge near South Sway Lane. This path is also a bridleway, which means it can be used by cycles and horses.

Another very short path which is for foot passage only runs from Centre Lane through to Wainsford Road, this one has metal barriers in place to restrict horse or bike entry, although there is a cut through from East Lane to Buckstone Close which is frequently used by cycles. In years gone by beasts of burden, or stock being taken to market used bridleways, but that was a very long time ago.

One of the other footpaths in Everton's near proximity is one which can be accessed at Woodcock Lane in Hordle or picked up again at Arnewood House, this one can lead you back to Everton through woodland to Batchley Farm where you will join up again with the first footpath that is mentioned here. As you reach this four way junction of the paths older residents will possibly remember that here stood a big farmhouse by a classical duck pond, both are now long gone. Now you have a choice, if you turn left at this crossroad you will be heading up to Silver Street again, if you turn right you will be brought back to Everton. Following the Everton track you will soon be passing close to the site of where a simple dwelling once stood. It was last inhabited by a lady called Mrs. Church, who in the 1950's lived there on her own, and who seemed content with her lot; before she took up residence Mr. Nash used to live close by. There is no building there now, just a nearby barn. However if you take the final arm of the crossroad and carry straight on across the field by the farm, you will come up through the woods to Wainsford Road.

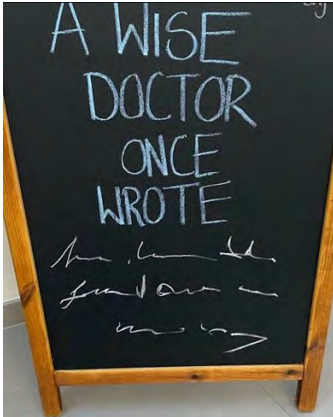
This path edges the wood as it comes to the road, and at the point where a New Forest National Park sign now sits, a man called Howard-Tripp (which was his surname), tried to establish a mink farm, circa 1960's period. He had enjoyed a varied career and had been a tea planter in Northern India, before returning to England to open a boarding school for girls in Ridgeway Lane near Lymington. However, Mink farming was not meant to be, and the unit became run down and fell into disrepair after some years, nonetheless Mr. Howard Tripp still became a very wealthy man as he sold the girls school with accompanying land for a great deal of money, and decided gainful employment was no longer needed.

There are a couple of footpaths at Lymore, one running off Lymore lane at Braxton gardens, which used to be a farm worked by My Dyer in the 1950's. This path runs through woods behind what used to be Efford experimental station when the government owned it. That has been replaced by Otters Nurseries and various business ventures. Follow this path and you come out at Efford Hill where it continues on the Lymington side of the hill over to Pennington, eventually emerging opposite Pennington Common. The other path at Lymore runs from Agarton Lane, running towards either Keyhaven or the back of Efford where it joins with the previously mentioned path. There are several other paths at Downton, Milford and Hordle, all of which an Ordnance Survey Map will show on inspection, and are all there to be walked.

OLD CODGERS' CORNER

(A column for those of a certain maturity)

Before criticising someone, walk a mile in their shoes. Then when you do speak out, you'll be a mile away and have their shoes!



NAILED IT!!!



Quote du jour: "Cocooned inside our private dramas we often don't realise life is rolling by us like it should"
Walter Rant

Did you know?...the definition for "Old Codger" is.."An old man, especially one who is strange or humorous in some way" (Cambridge Dictionary)

The Rainographer

We have an inbuilt predisposition for being obsessed with the weather in the United Kingdom. Vast sums of money are spent each year and countless meteorologists are engaged in forecasting what to expect on a daily basis. Often they are correct but on occasion they can be spectacularly wrong! It is somewhat surprising then, that our obsession with the weather in general has produced so few “quotable” quotes. Apart, of course, from a famous BBC TV forecaster who once said, “Some people have ‘phoned in to say ‘there’s a big storm on the way’. “Don’t worry there isn’t!”. The next morning we awoke to widespread damage up and down most of the so perhaps the subject is too serious to generate flippant remarks!

Given the less than pleasant conditions of the summer so far, Lord Byron’s comment that “The English winter - ending in July, to recommence in August.” may seem appropriate. In the case of the Rainographer at least, the following anonymous quote also seems very fitting! “Now is the time of year - for the bulbs you didn’t get round to planting last autumn - not to come up!”

Rainfall for the first half of 2021 with a comparison for the same period in 2020 is as follows:

	2021		2020	
	<u>Mms.</u>	<u>Ins.</u>	<u>Mms.</u>	<u>Ins.</u>
January	137	5.3/8	98	3.7/8
February	70	2.3/4	120	4.3/4
March	34	1.3/8	56	2.1/4
April	3	0.1/8	45	1.3/4
May	67	2.5/8	2	--
June	111	4.1/4	38	1.1/2
<u>Total to date</u>	<u>422</u>	<u>16.1/2</u>	<u>359</u>	<u>14.1/8</u>



“Man owes his entire existence to a few inches of top soil and the fact that it rains” - Nicholas Watts (Fenland Farmer)

A Historical look at Everton Churches

Everton Methodist Church



We only have 3 pieces of evidence of the existence of this Chapel (named Everton Wesleyan Chapel). The first is on a post card showing its position opposite the White House in Old Christchurch Road. The is marked on a 1931 Ordnance Survey Map. The third and main account is found in the Everton book "Memories of Everton~" by Robert Walker who wrote the following article:-

"The Chapel as it was known was beyond the crossroads on the same side of the road as the Church and opposite "Rodbourne" (now the White

House). It was built before the First World War and ran along the roadside. It was about the same size as St. Mary's and was of the same construction (corrugated iron flat pack building), again being lit by oil lamps with a "go slow" combustion stove with a long flu pipe. The seating was long portable open benches.

Most Everton children including many who were supposed to be C of E, seemed to attend the Chapel Sunday School, but looking back now (written in the 1940's) I cannot remember any of the so-called "better off" Evertonians using the Chapel. Most of the Preachers were part timers and there were a few who wore their collars back to front but I must say they always appeared to be sincere.

The Harvest Festival was the highlight of the year when on about the Tuesday after, there would be another short Service followed by an auction of the produce for Chapel funds. The Chapel used to pay an annual token ground rent of 6d (or 3 new pence) to Mr. Gossling of Newlands Manor

The only other thing I can find out about the Wesleyan Chapel was that they had the first Company of the 1st Everton Boys' Brigade. This was formed in 1930 by Mr. Gus Payne of Lymington and met in the Chapel. Boys came from all over the district as it was very popular. In 1933 a few of us went by special rail excursion to the BB Jubilee Celebrations at Wembley Stadium. Mr. Payne also purchased some old wooden bungalows (from "tin town" the other side of Lymington Pier) and under his instructions we boys stripped these down and made them into portable sections for a large meeting hut which was later erected on a small piece of land in Fry's Lane. (opposite what is now Hart's Way – now occupied by a bungalow"

This is of real interest to me as I have been involved with the Boys' Brigade for many years and was Captain of the first Tiptoe Company and quite a few years ago before I moved to Everton I was given a Boys' Brigade hymn book and some memorabilia from the 1933 Jubilee marked with the name 1st Everton Boys' Brigade, and when Bill Cornish passed away I was given the paperwork relating to the land in Fry's Lane. So in finishing, if anyone could tell me when the Wesleyan Chapel was actually demolished, I would be grateful, and if anyone has any family pictures of that building or of their past relatives that were in the Boys' Brigade in the 1930's/40's, I would be pleased to hear from you. - **Mike Johnson**

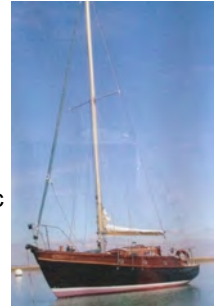


BACK ON DRY LAND....

THE YACHTING ADVENTURES OF TWO EVERTON SAILORS

By Elizabeth Kemp

We sail A 27' Pintail, named Kingfisher. She is of wooden construction and painted a dark green. She is lovely as you can see.



Our mooring is up the Beaulieu River - close to the wooded shore at Baileys Hard. It is a magical place – without much traffic – the larger yachts and motor cruisers being further down the river at Bucklers Hard Marina. It becomes increasingly shallow at our mooring, but we are always afloat.

Last Spring we not only lost sailing time because of Covid restrictions, but because a nest of fledgling wagtails took up residence in the cockpit. Not wanting to disturb them, we didn't go sailing till June!

But things are different this year! We bought an industrial sewing machine and a length of dark green canvas fabric and over time, and multiple fittings – made a weatherproof cover that inhibits the wagtails as well as looking tidy and being functional. We can also mend the sails now!

We got the bulk of the maintenance done in April this year, sailing the boat to the Keyhaven Marina via Lymington, to be in time for the high tide. We were lucky with the weather, and without my help the boat got repainted from deck to hull, a GPS Chart Plotter was fitted and everything made good.



So, looking good we have returned to our mooring. Brian (the Captain) came home one day to say he thought he had seen a white tailed sea eagle and a few days later was sitting on the boat and was able to watch as the eagle perched on a nearby tree and for a full 45 minutes. These eagles have been released on the Isle of Wight and Beaulieu River is a happy hunting ground for them.

Great excitement and everyone is now rowing, canoeing and paddle boarding with one eye on the river and one eye skywards in the hope of a sighting. Meanwhile of course – they are missing the fat seal who likes to lie on the rubber tenders, basking in the sunshine.

As always I hope to see you on the river one day; a cup of tea will be ready, made for you on the new red stove. Mind the jelly fish though, they come in and out with the tide. And lets hope you get to see the eagle too.

Anyone for Pétanque??



Pétanque at the "Knees Up"

Did you know??

Everton has it's very own Pétanque court behind the Pavilion at the Recreation Ground.

If you want to know more then contact club secretary, James Compton Bennett by email at everton-petanque@gmail.com

**Allegedly, Humans reach emotional maturity at the age of 25!
Do you agree??**

Barn Court Bed and Breakfast

19 Frys Lane, Everton SO41 0JY



One Double Room with en-suite
Shower Room

Open all year – **Sorry no pets.**

Ample off-road parking and secure
cycle storage

For further details please see
www.barncourtbandb.co.uk

DAVID RUTTER ANTIQUE FURNITURE RESTORATION

All Furniture Repaired

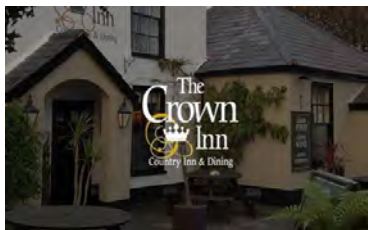
French Polishing, Turning, Carving,
Marquetry

Specialist in Boulework

5 Frys Lane, Everton, SO41 0JY

Tel. 01590 641824

Meet Martin Hinkes, the new landlord of the Crown Inn.



I know some of you will have already met Martin, however some of you may not have had the chance, so I decided, as Editor, to put my “journalist hat” back on and have a chat over a glass of bubbles.

What became clear very early on is Martin’s passion for making The Crown Inn a community pub with a capital C, together with Claire and Ellie, his front of house team.

He’s no stranger to the hospitality industry, having started at the age of 14 as a pot washer, however it was his love of food and cooking that led him to working his way up to being a chef. It’s this love of traditional cooking that he wants to bring to the Pub. *“I want to serve traditional and classic pub food”*, said Martin. The menu has been extended in August to serve Sunday lunch with more dishes being added over time. However, it’s currently only Martin in the kitchen, as he is actively recruiting for experienced, motivated and community spirited individuals to join the team, both front of house and in the kitchen. Contact Martin on Martin@thecrowninneverton.com

It has been a difficult first few months, however both Martin and Claire wanted to thank everyone for their support. *“It’s great to see the locals back and they have been so supportive,”* said Claire.

Keeping the pub at the centre of the community has already started with local bands playing every Saturday at 3pm and also opening the doors to charity events in August (Macmillan Brave the Shave and Oakhaven Hospice).

On the horizon will be food theme nights, a wine club. I suggested a pudding club would also gone down well! Martin also has plans to establish a regular quiz night and darts team - all things to bring the community together. So, if you’re looking for a venue for your book club or group event then give Martin a call.

A date for the diary is **Sunday 14th November, Remembrance Sunday**, the pub will open all day, there will be a 1940’s theme, with music and dance. There will also be raffles where all monies raised will go to the British Legion. *“It is something I feel very strongly about and have done many times in my career,”* said Martin.

The pub is also going to be open on Christmas Day, there will be more information coming soon on how you can book lunch.

On the way out, a few of the locals stopped me to say that Crown Inn is once again becoming an asset to the local community.

FRIENDS

To have a friend or pal or mate
We would not wish to contemplate
They come by chance or luck or fate.
At work, the pub, the field of play
They're close at hand, not far away
You might have only met today.
Acquaintance, colleague, oppo, chum—
We grade them by our rule of thumb
They're all OK (except for some!)
How long do all such friendships last?
Perhaps until the moments passed,
Maybe since your distant past.
And trust? It's earned and it can grow,
If recent or from long ago,
It's all a judgement—we just **know**.
So where are friends? Are they just "there" through thick and thin, when we
despair?
If they are they're more than rare
We raise a glass to "absent friends"
Do we miss them? That depends on friendships that reaped dividends
Diverse lives, a different "set"
Those friends we have, who never met each other, to our mild regret
We stay in touch, **lest we forget**.

By John. T

"A friend is one that knows you as you are, understands where you have been, accepts what you have become, and still, gently allows you to grow." – William Shakespeare

Activities in Everton

Please note that all Everton contact numbers are prefixed with the code 01590.

Please contact the Editor if there are any additions or corrections

Activity	Day/Time	Contact	Tel. No.
Art Group	Pavilion, Thurs. 2pm 1 st Saturday	Elizabeth Kemp Karol Williams	718792 01425 622012
Art Class with teacher	Church Hall, Mon. 10am	Heather Jolliffe	07545 973870
Bridge Club	Church Hall, Tues. 6.30pm	Eve Ritchie Fallon	676528
Everton Community Association	All villagers are auto- matically members	Elizabeth Kemp	718792
Everton & Lymore Social Club	Old Christchurch Road	John May	643865
Friendship Lunch	Church Hall	Gillian Peard	644739
Hordle Vol. Group		Ian Chislett-Bruce	01425 614174
Ladies Evening Group	Church Hall, 1 st Wednesday, 2pm	Carrie Kaye	644252
Lindy Hoppers	Pavilion, Fri. 6.00pm	Elizabeth Kemp	718792
Music & Movement (pre-school age)	Church Hall, Thurs. 9am	Cynthia Wilson	622488
Pétanque	Pavilion	evertonpetanque@gmail.com	
Pilates	Church Hall, Weds. 6.30pm & 7.45pm	Diana Steer	01425 610756
Pop in Coffee	Church Hall Tues morning	Gillian Peard	644739
Ramblers		Tony Shonfeld	718516
Table Tennis Club	Church Hall	Gillian Peard	644739
WI	Church Hall, 3 rd Wed, 2.30pm	Penny Clark	642672
Yoga (Ananda Dance & Yoga)	Pavilion Mon. 6pm Weds. 7.30pm Sat. am	Dererca Sprake Hannah Baston Hannah Bimpson	675695 07913 108401 07714 581721

The Editor and printers do not take responsibility for the information given or views expressed in the Everton News. Nor is any culpability accepted in the work done by the advertisers

Printed by Smith & Sons
New Milton