

EVERTON NEWS

Autumn 2017



Everton Community Association



Hello again, this will be the last time of writing to you all as I have resigned the Chairpersonship as of December 31st 2017.

I hope you all agree that the 2017 Everton Village Festival held in June was one of the best weeks of the year for the villagers.

I tried to attend all of the music venues and was exhausted by the time the Sunday Finale was completed. However I enjoyed all of the music that I was privileged to listen to. I also squeezed some time in to see some of the fabulous Art exhibitions.

The Village is so lucky to have volunteers who invest their free time and put together such a wonderful spectrum of Musical and Artistic talent.

Many thanks go to the Festival Committee, especially Steve Adams, who also provided several ukulele sessions, at which on one occasion I tried to strum, only to find that some of my fingers do not respond to orders!

A little earlier in the year the Village Newsletter hit the streets. Again a magnificent effort by Cheryl Fillmore, the Editor and Producer. Cheryl also drives the Festival Committee. The Festival Committee need my thanks as I have worked with them as a team for several years and will miss my time with them.

As most of you know the events provided by the ECA always need financing, especially when many events are free of charge on entry. Our income is derived from various sources, but a large amount of our finance comes to us through the actions of Stewart Atkins and we thank him for his excellent skill of encouraging business people to invest in our Village.

I should say the Government's austerity measures are having an effect on us all. The Newsletter will not be funded by Hordle Parish Council anymore, and its continuation will therefore rely on advertising revenue and grants.

Everton Village will always have a place in my thoughts and I wish all villagers a very Happy Christmas and a prosperous New Year.

Roger Hockham

Farmer's Walk

Farmers Walk is now a quiet side road leading from Everton Road to Everton Garden Centre at its western end. Hard to believe it was once part of the main Lymington to Christchurch road before the A337 bypassed the village in the 1980s. Houses large and small are mostly secluded behind tree-lined and hedge-lined frontages on the northern side. The southern side has just one house entrance: the rest comprises the back fences of the bungalows on Rodbourne Close. As pedestrians will know, the impression of Farmers Walk as a quiet lane comes in part from its lack of pavements. There is a deep ditch in the grass verges on either side of the roadway.

But this leafy and quiet vista, what one neighbour has described as 'sylvan', is not necessarily a permanent fixture. There are active planning applications for at least two properties in the road with a third having recently been sold to developers. Significant parts of the present green 'screen' could be lost to any of these developments. One certainty is for more cars to be making regular use of the road as the density of housing will only increase. A persistent problem, complained of by local residents, is the extensive, sometimes long-term, parking on one side of Farmers Walk. Larger vehicles can have difficulty negotiating the road, though Everton Nurseries tries to direct its own deliveries to its main entrance on the A337.

Interested villagers who wish to conserve the leafy tranquillity of this part of Everton should keep alert for proposals any developments. You can contact councillors - Parish or NFDC - and voice your feelings and concerns at any time. If Everton is to retain the qualities that make it an attractive place to live, we need to ensure that any developments are positive and will enhance that status.

Dave Miller

Everton in 1963 – Farmers Walk bottom left (image from the Everton Village website courtesy of Gill Rowlands)



The Editor, Printers and Hordle Parish Council do not take responsibility for the information given or views expressed in the Everton Newsletter. Nor is any culpability accepted in the work done by advertisers.

EDITOR'S MUSINGS

3



Dear readers,

Autumn used to be my favourite month but now that I spend most of my time gathering leaves and cleaning muddy dogs it has dropped a few spaces down the list! Nonetheless there are still good things to enjoy, woodburning stoves and a glass of red wine come instantly to mind...but there's plenty more going on, Autumn bazaars, film shows, quiz evenings, Christmas carols, a quick glance through all the contributions that have come in

for this edition have certainly proved that! I was asked recently which part of the process of being Editor I most enjoy, and I said quite honestly that it's seeing and reading the articles, photographs etc. that pour into my mailbox. It's great to see such enthusiasm and interest in such a small community. Long may it last!

On a more serious note, I have received a couple of letters which have been included this time, sadly problems with parking in Farmer's Walk continue. I've heard complaints about Golden Crescent too so it looks like this is a common problem. We all have cars, we all like to park as close to our homes as we can, so I think the answer is just to be thoughtful...have a look before you park, check for driveways and make sure you aren't causing an obstruction.. After all, nobody wants yellow lines in Everton!

Cheers everyone...ED.

Car Parking

Dear Cheryl,

I would like to raise the matter of discourteous car and van parking in Farmers Walk. The main culprits are the owners of vehicles who live in Rodbourne Close but park in Farmer's Walk and block the driveways opposite. This has caused problems for residents of Farmer's Walk as by narrowing the road, access to properties has become increasingly difficult and has caused damage to vehicles whilst owners try to reverse in. I also understand that we now have a person parking his car in Farmers Walk and then walking back across the Everton Rd to return home. I am given to understand that one of the cars belonging to a resident of Rodbourne Close was keyed and we do not want this to escalate.

Sorry to have to raise this matter but in a small little village this behaviour is not necessary.

Kind regards

(Name and address supplied)

Everton Festival

Dear Cheryl

What a wonderful Village Festival. Thank you especially, but all the rest of the team as well for such a great week.

You all surpassed yourselves. We felt throughout it all that there was such a lovely community spirit. The venues and events were well planned and organised and also well attended.

Any event like this is such hard work and we do hope you had all the help you needed. Referring back to the last Everton News and Roger's letter, particularly the first paragraph, he mentioned the ECA and members of the village who do not get involved in village affairs. After being Chairman of the ECA for 10 years, I knew exactly what he meant. It is disheartening for Committee Members, after attending meetings throughout the year and arranging events i.e. Fete or Festival, not to get the offers of help from all areas of the village which would make the task that much lighter. So if you have recently moved into the village (or been here for years) a good suggestion is to contact Cheryl and see how you can be involved. We feel that the Festivals have gone a long way in building up a greater sense of community.

A big thank you too to Barrie and Carol (from the shop) for their interest and involvement as newcomers. We're so pleased they are a permanent fixture!!

Michael and Cilla Johnson

In this issue

Village News.....	2
Community News.....	3-5
Village Groups.....	5-11
Festival News.....	12-13
St Mary's Church...	14-16
Village Matters...	17-21
Quiz.....	22
Old Codgers Corner.....	23
Village Activities.....	24

NEWSLETTER DELIVERY FOLK ARE NEEDED!

If you can a spare half an hour
twice a year we'd love your help
in delivering this
Village Newsletter.

Please get in touch with
Hilary Knox 01590 642786.

Dog Poo Bins Toby Sears

May I send a big, big thankyou to all residents who supported the petition for bins in Everton.

As you may remember I was told that there were bins waiting to be sited in our villages if we wanted them but I was also told we needed to show a demand. As a result I teamed up with the shop to get support for a poo bag bin at the entrance to the footpath through the woods in Wainsford Road as well as at shop. The bins are needed to try and help keep our paths and hedges free of poo, poo bags and rubbish!

At one point we were told the petition was unnecessary but we continued just in case. I didn't get to see how many signed and it was removed before I had a chance to take them around in the village (people who wanted to support it but hadn't noticed it in the shop) but I think we were up to 4 or 5 pages with at least another page waiting to sign.

On the plus side the shop got a rubbish bin which is encouraging people to bin their wrappers but will sadly never be used by those who throw their Macdonalds wrappers out of the car window! The downside is that the council has decided that, although they see no issue with residents walking along Wainsford Road with no footpath and allowing their refuse collectors to work in the road, they think it is far too dangerous for a van to pull in to the entrance to the farm and empty a bin. One suggestion was the bin could be in Greenmead Avenue but I have pointed out it would not be visible to the majority who walk up to and from the woods.

So, as you can see we have had a partial victory and who knows, maybe one day we will get a bin near the woods for dogwalkers to use so the bags in hedges and poo on the road and foot paths from irresponsible owners might be reduced? As always we are dependant on whoever we have voted in to New Forest District Council as to what services we receive as council tax payers be it roads or refuse!

COMMUNITY NEWS

THE PAVILION

CPR TRAINING

We have arranged four training sessions for CPR this year, which were well attended. We decided to leave the Summer break alone as interest waned.

We are discussing with the Lymington and Sway First Responders the possibility of running a training session in October 2017.

We will put up posters at the usual places with date, time and location in due course.

Our thanks go to all those who have taken up our previous offers. Most attendees benefited from the training.

*Roger and Angie Hockham
Heatbeat Followers*

The Pavilion is used by many residents as a meeting place for local group activities and the Acorn Pre School. It offers a large, comfortable room adjoined by a small kitchen. This can be hired for a very reasonable cost for meetings, parties and other social activities. **Please contact Alan Paice on 01590 644901.**

Groups that already use the Pavilion include:

Acorn Pre School.

If you are interested in your child joining us at Acorn Pre -school, please ring 01590 644649 and arrange a visit.

Yoga Classes.

For contact details please see back page

Art Groups

Diana Collard runs the Art Group on Thursday afternoons, they are a group of friendly people who meet to socialize and help each other with different



aspects related to drawing and painting. This is not a teaching class but hopefully offers help from other members of the group. Anyone interested in joining the group should contact Diana on 01590 643550

A new Art Group has just started, meeting on the first Saturday of each month from 9.30-4.00. It is run by Karolyn Williams 01425 622012

**To Book the Pavilion call
Jennifer Hood 07590805677**



Volunteer as the Village Agent

Why not consider becoming the Village Agent in
Tiptoe, Hordle and Everton

You would be volunteering for Age Concern Hampshire to signpost older people to local services and information. You would offer a few hours per week and be fully supported with training sessions and informal get-togethers with other Village Agents across the county.

For further information or to apply please contact
the Village Agents Coordinator 01962 892443



HAYWARD FOX
OF MILFORD-ON-SEA

ESTATE & LETTING AGENTS

Selling properties throughout the area,
specialising in Milford-on-Sea,
Everton and Hordle

We also have offices in
LYMINGTON, NEW MILTON, SWAY,
BROCKENHURST, BRANSORE
and LONDON MAYFAIR

Local, Experienced and Successful

www.haywardfox.co.uk

Tel: 01590 644933

E-mail: milford@haywardfox.co.uk

DAVID RUTTER ANTIQUE FURNITURE RESTORATION

French Polishing, Turning
Carving, Marquetry
Specialist in Boulework
~~All Furniture repaired~~

**5 Frys Lane, Everton, SO41
OJY
Tel. 01590 641824**

Community Speedwatch

We have been very fortunate in being invited to two events related to speed in the Beaulieu Motor Museum calendar. The first was the '999 Event' on the 29th May (bank holiday) and the second the 'Wacky Record Breakers' on the 23rd July, as seen on the local BBC TV that evening.

The 999 Event covered all emergency service vehicles and personnel including vintage vehicles, a dog handling demonstration plus Hampshire's only mounted Policeman. Our CSW 'SID' (Speed Indicator Device) was invited along with Sway and Lyndhurst and we were asked to take the speed of some of the older vehicles including a Penny Farthing bike, which reached 23 mph with a very brave rider. In addition to this the three groups were demonstrating how the SID works and talking to the public about our role as volunteers in the community. The Police Crime Commissioner (PCC) came over to observe the equipment.

The Wacky Record Breakers were amazing and all road worthy, licenced and taxed to drive on the public highway. The lounge scene and the bathroom were the two that were allowed to come out in the rain; by the way, did I say that it poured with rain that day! We were asked to test them out for speed like the earlier event, and both vehicles did 33 mph after a couple of practice runs. The other vehicles in this collection of Wacky Record Breakers were housed in the dry of the museum for us all to go and visit. Because of the inclement weather the public did not hang around to talk on this occasion, just came over to observe the spectacle of a lounge suite and bathroom doing 33 mph down the drive.

Back to our serious work – we are taking SID out twice a week throughout the Parish and I have to report that Wootton Road,

Tiptoe, holds the record for speeding vehicles, on one occasion 38.7% of the vehicles were reported, followed by Everton Road, Everton with 25%. These are reported to the Police at the end of each session and letters are sent out to first time offenders.



Members of the public often say to us 'you should have been here earlier (or later)' but unfortunately that is not always possible. We are restricted by the Police for the areas in which we can operate as well as only in day light hours. Further restrictions are on volunteers being available. Currently we are only allowed to go out with three volunteers or more on a session and only covering 30 mph roads.

I do have to say 'thank you' to all the volunteers who turn out regularly, some at 7a.m. – this will be later in the winter. We are always looking for more volunteers to work during the day time for just an hour at a time. Hi-vis jackets and clip boards supplied. Please contact Cllr. Pat Rendell in the first instance.

Pat Rendell



All Round Handyman Services Paul C. White

- Qualified Electrician rev 17
- Sockets for Christmas Lights
- Equipment/Safety PAT Testing
- New lightfittings
- Roofing and gutter repairs
- Painting Decorating
- Kitchen / bathroom fitting
- Small plumbing jobs
- Flatpack assembly

Tel: 01590 644833 Mob: 07967 336830
Covering: Everton, Hordle, Lymington, Milford, New Milton

WE CARE ENOUGH TO ANSWER YOUR CALL 24 HRS A DAY

AIRPORTS • DOCKS • STATIONS

PARCEL DELIVERIES

FOREST TOURS

SHOPPING TRIPS

We are enjoying another successful year of walks and social events. The accompanying photo shows us near the Newtown estuary on the Isle of Wight last April.

Our membership number is 80 of which 20 on average attend our bi monthly walks starting at 10:30 a.m. The time taken is generally three hours and occasionally there are opportunities for a pub lunch for those so inclined.

All walks have a leader who before the event will circulate details of the walk to members giving directions of the meeting point, usually a forest car park and describing the conditions that can be expected during the walks.

The following poem was penned by Hon. Member Joan Smith in 2004 and typifies our ethos as a Rambling club. Sadly Joan passed away on Tuesday 3rd October and we extend our condolences to Geoff and his family.



In Praise of our leaders

Confident in our leader
We follow up the track
Through wooded bluebell paths
and fields
It's certain we'll be back.

We stop for lunch along the way
Chat and laugh, there's lots to say
Back on our feet refreshed again
To end the walk before the rain!
Joan Smith

Anyone interested to accompany us on an introductory walk can contact Merv Hughes by phone on 01590-642509 or e-mail mervhughes@me.com. (see our poster on the garage door at the post office)

Everton Bridge Club

Everton Bridge Club continues to thrive through 2017 with around 50 full playing members drawn from throughout the local area. We meet every Tuesday Evening and have up to 9 tables playing duplicate bridge in a friendly, competitive environment.

We meet at around 6.30 pm in St. Mary's Church Hall and guests or visiting players are always welcome. Except for the 1st Tuesday in each month when we have our Ladder Pairs competition, we run a host system that means we can even accommodate single players looking for a game on most occasions.

As a Club, we feel it is important to make a contribution to help others and we actively support local and national charities. This year our annual Charity Event in March was in aid of 'Rose Road' who are based in Southampton and provide help and support services to young disabled people up to the age of 25.

In November, we will again take part in the National 'Children in Need' Simultaneous Pairs Competition, pitting our wits against thousands of other bridge players across the country.

On the social front, the annual Chairman's BBQ in July was great fun with good food, good company and good humour. Around 30 members and guests turned out to enjoy the sunshine and steak, superbly cooked by the Chairman himself! His skill with the BBQ tongs is only matched by his ability to organise the weather!

Our next social milestone will be our AGM and Christmas Party in December when we will combine a buffet complemented by the Chairman's Punch with some light hearted bridge for some fantastic prizes!

If you are interested in coming along to meet us and hopefully join our Club you will find all our details on our web page at www.bridgewebs.com/evertonbc/. There is an e-mail contact via the web page or please feel free to contact Eve Ritchie-Fallon on 01590 676528.

Everton & Lymore Social Club

7

Last month's film was 'The Viceroy's House' with Hugh Bonneville and the previous month we screened 'Their Finest' with Bill Nighy and Gemma Arterton. The films are usually the last Friday of the month and are free. Any suggestions are welcome and we hope to show Victoria and Abdul soon.

We've just had another successful Pumpkin and Sunflower Sunday, accompanied by 'Grand Canyon' who also played on Saturday evening.

You may remember 'Empty Frets' who were part of the Everton Village Festival in June, well they are here on 7th October and 18th November.

Fundraising is part of the Club's ethos and on 14th October we are hosting a Charity Auction in aid of Headway. The Radio Solent presenter Richard Cartridge will be the mellow voiced auctioneer. Oakhaven is our regular recipient of other fundraising efforts and the recent cake competition provided another donation to them.

A large group of members enjoyed a chilly but happy day out at Ascot recently and another group are off to Newquay in the New Year.

The Club is very welcoming to new members and we'd love to see you. Pop in for a coffee or a beer anytime and get a feel of the place. We have new furniture in both bars and have added new curtains. We can make the lounge area available for private hire, birthdays, anniversaries, wakes etc. It's ideal having a bar with Club prices.!

Saturday 7th October	Empty Frets
14th	Headway Auction
21st	Sticky Jam Band
28th	Children's Halloween Party

Saturday 4th November	Chris Thomas
1st	Groove Rush
18th	Empty Frets
25th	Sunstroke

Saturday 2nd December	Bandtastic
7th	Pensioners Party
31st	Steve Williams

HAPPY NEW YEAR!

Gill Rowlands



Useful contact details

Hordle Parish Council

Cllr Sue Bown (Chairman) 01425 618757

Cllr David Horne (Vice -Chairman) 01425 614998

New Forest District Councillors (Hordle and Milford)

Cllr Fran Carpenter 01425 614665

Cllr Penny Lovelace 01590 681889

Cllr Sophie Beeton 07546 484602

Cllr Mel Kendall 01590 642575

Hordle Parish Council

Parish Clerk 01590 611119

and to report

Highway maintenance matters 0845 6035633

Litter and Fly tipping 023 80285000



**NHS EYE TESTS, GLAUCOMA AND
MACULAR DEGENERATION TESTS,
DIABETIC RETINOPATHY, OCT SCAN
AND ALL EYE RELATED PROBLEMS,
CAN BE DEALT WITH IN PRACTICE**

**FOR APPOINTMENTS PLEASE
PHONE 01590 675576**

Hassan-Hicks

REGISTERED OPTICIANS

Bsc(Hons), Mc OPTOM, FADO MFDO, CL cert

18 St Thomas Street, Lymington SO41 9NB

Box Tree Cottage

A delightfully comfortable self-contained private annexe

Light and sunny in a simple fresh style

Sleeps two people

Comfortable living room with fully equipped kitchenette

Galleried double bedroom with en suite shower room

All linen and towels provided

View on Owner's Direct and Airbnb

01590 641722

07789 584367

Boxtreecott@gmail.com



West Lane,
Everton SO41 0JQ

EVERTON LADIES EVENING GROUP – LEGS 8

Winter approaches, but you can be sure of a warm welcome on the 1st Monday evening of each month at St Mary's Church Hall.

Everton Ladies' Evening Group, known as LEGS, continues its programme with a musical quiz run by John Sherbourne on the 6th November and if that strikes the right note you are welcome to come and test your knowledge with us. December 11th is the date for our Christmas party and this is always an enjoyable event especially as the Hall is so beautifully decorated.

To start the new year with a rattle, on January 8th we will be holding our usual raucous Beetle Drive – always a relaxed, happy and somewhat noisy occasion, which is just how we enjoy spending our first-Monday evenings throughout the year. We have arranged a variety of speakers for future meetings and these will be advertised in advance each month on the Everton Post Office noticeboard, so keep an eye open to ensure you don't miss anything.

LEGS, independent and unaffiliated and now in its' 39th year, is aimed at all ladies in the Everton area, young or old, long-time resident or new-to-the-area, and I do encourage you to give us a go because we like to think we are a friendly lot, and a cup of coffee in company always tastes better.

For any information please call me on 644252.

CARRIE KAYE

MILFORD ON SEA BOWLING



We started the outdoor season in April with our Pavilion completely modernised and looking great. The green was as always at its best. A lot of work had been put into the refurbishment project by our contractors and members during the Winter months. Our two Open Mornings in May saw us inundated with potential members wanting to learn more about the sport and what the Club offers. By late June we had record membership levels both in the Men's and Ladies Sections and had to take the decision to defer any further newcomers until the beginning of the 2018 season. Many of the newcomers have already done really well in the short time they have been with us, participating in league play and competitions. We have already spotted some future stars!

This year David Hall, of our long-standing members, and a senior coach for the Club, won the Champion of Champions Cup in the Bournemouth & District Association which comprises 29 Clubs in the area. Amazingly, he also was the runner-up in the New Forest Bowls Association's Champion of Champions Competition. Our Ladies' 1st team came top of the league in the New Forest Women's Bowls Association but our men were not as successful in their leagues. In the Saturday mixed triples league our teams finished very respectably. Overall, Milford on Sea Bowls Club enjoyed a very successful year.

The green is now closed for this year but activities still continue in the pavilion, with members already planning and looking forward to next season. Now, membership enquiries are again welcomed for next year and if you are interested please make contact as soon as possible to get 'on the list' by contacting the Honorary Secretary, Peter Kaye on 07736 100886 or email him at peterkayeathome@gmail.com

**Pennington**
MOBILITY

FREE
PARKING

DAILY LIVING AIDS &
MOBILITY PRODUCTS

Scooters, Wheelchairs
and Rollators

Riser recliner and
highback chairs

Bathing and
Toileting Aids

Cosyfeet DB
Stockist

BHTA
British
Healthcare
Trades
Association

APPROVED CODE
TRADING PARTNER

10 South St, Pennington, Lymington SO41 8ED

01590 672900

Visit: penningtonmobility.co.uk

**Pennington**
PHARMACY

FREE
PARKING

YOUR LOCAL
INDEPENDENT
PHARMACY

OPEN:
Mon - Fri
9am - 5:30pm
Sat 9am - 1pm

Private
consultation room

Free local
prescription delivery

FREE medicine
use review

Open at lunch



14 South St, Pennington, Lymington SO41 8ED

01590 673745

Visit: penningtonpharmacy.co.uk

Table Tennis Club.

The Table Tennis Club began a new season in September. We meet at 7.30 pm on Friday evenings in St, Mary's Church Hall.

We usually play till 8.30 pm and then we have a social time with a cold drink and a biscuit before playing a few more games and finishing at 9.30 pm.

All you need is a pair of soft shoes and £2 for each evening you attend. Bats and balls are provided although some players have their own bats.

If you enjoy Table Tennis, or if you have never played, do come along one Friday evening. We will be pleased to see you.

Gillian 01590 644739



EVERTON AND LYMORE W.I.

9

Each WI member automatically receives a regular copy of the WI magazine, WI Life, with news of NFWI events and campaigns, letters from members and various articles on gardening and craft work or other leisure activities including travel offers etc..

The most recent issue, July & August 2017, contains reports from this year's Annual Meeting of NFWI and several things caught my eye.

In the early 70's I lived in North Cave, E.Yorks., and so I read with interest that it was North Cave WI who had proposed one of this year's resolutions "to tackle the hidden epidemic of loneliness".

It is estimated that 1 in 5 of us will feel lonely at some time in our lives and, as the article says, **One thing that WI members do best is talk – so, let's talk!** Everton and Lymore WI meets in St Mary's Hall at 2.30pm on the 3rd Wednesday of each month and we would welcome the chance to chat so please don't sit at home feeling lonely, come and join us.

Another report I noticed was that of a speech given by lexicographer, Susie Dent, which mentions new words appearing in our language. It seems that 'hangry' means bad-tempered or irritable due to hunger and 'procaffeination' is the inability to make a decision until you've had a cup of tea or coffee I can identify with that one!

We hope to see you at a meeting soon.

Jan Morris

Mobile Fish and Chip Van in Everton on Monday evenings

This regular visitor calls at Roberts Close at 6, then moves on to Plantation and then Buckstone. Just follow the Ice Cream chimes!!

Acacia Cottage B&B



1 double
and
1 twin room
Iris and Richard Slee
88 Wainsford Road,
Everton SO41 0UD
01590 641495
iris.slee7@gmail.com

A WI TASTE OF CHRISTMAS

10am till 12noon on Saturday,
2nd December 2017
at The Old Barn,
19 Fry's Lane, Everton
For coffee, cake, produce and
Christmas gifts.

Everyone welcome.

MEETING DATES AND DETAILS

15th March; Getting Away From it All; Mike Johnson
19th April; What the Butler Saw--Mr. J. Pitman
17th May; AGM
21st June; National Trust "Finest Gardens" Spring and Summer. DVD
We also have an outing in July and a cream tea in August.
Christmas lunch in December in a restaurant in the local area.
Our W.I. in Everton meets on the 3rd Wednesday of every month, we also meet for a craft afternoon on the 4th Wednesday.
We are based at St. Mary's Church Hall in Branwood Close, Everton SO410LU.
Please come and join us, the first month is free to see if you like us.
For further information ring Mrs. Vera Peters 01590642981 or Joyce Pope 01590 644467.



Home Visiting Chiropodist/Podiatrist

For all your foot care needs from
nail cutting and skin problems to
biomechanics. NHS trained.

Special 'simply nails' fee please
enquire or see website

Recognised by "Simply Health" Insurance
Amanda Newell MA, BSc(Hons) Pod, MChS.

01425 618610

Website: www.amandanewell-chiropodist.co.uk



Summer has definitely gone, not that the last couple of months have been much to write home about! Really lovely until the kids broke up for the holidays and then.....! Still, it was a really lovely day in June when we welcomed so many of you here for the final day of the Everton Festival, concluding with the Swing Band, and what a lovely evening that was! Roll on next year, and we look forward to hearing about what you have planned for us, Cheryl.

As autumn draws on, there are plenty of things to keep us busy in the nursery. In the field, there is the last of the training and trimming of trees and the general clean up prior to winter. Trees must be measured and checked for grade before final stock-taking and lifting will commence later in the autumn after leaf fall. In the container department, with all pot-

ting up finished a few weeks ago, again final assessment for grade and size can be made. Herbaceous perennials are trimmed back and tidied and tender subjects will be brought under cover, into one of the glasshouses or polytunnels. Autumn through to spring is the busy time for despatch to all our Wholesale and Landscape Contracting customers, so there is plenty to keep our nursery staff and drivers busy.

In the Garden Centre preparations are well under way for Christmas, with an area put aside for the seasonal displays which should be ready by the latter part of October. The remainder of the centre still carries on as usual, currently emphasising autumn planted bulbs and bedding, as well as a super range of the new season's shrubs, trees and fruit trees from the nursery.

Please don't forget your local wildlife as we go into the winter. As well as a varied and relatively abundant wild birds in the area, there are a number of folks in the village who are the lucky custodians to an increasingly healthy population of hedgehogs, a garden visitor whose numbers have been dwindling for many years. In the Centre we have the usual ranges of bird feeds and also a specialist range of hedgehog feeds, it's well worth encouraging them as the their principal diet is creepy crawlies, slugs, caterpillars, snails, and insects, a real gardener's friend!

Pop round and see us soon. Come and enjoy a coffee and cake in Camellias, have a chat with our staff, they will be pleased to see you and are always happy to help and advise.

Good wishes to you all from the team at Everton Nurseries!

Hedgehogs in Everton

Judging by the phone calls and messages I've recently had it looks like our prickly friends are continuing to enchant us by visiting our gardens. Pauline Day of Frys Lane related an amusing incident where these two Tiggywinkles arrived in her garden and to her astonishment took an impromptu swim across her pond!!



Of course this is the time of year when they start to hibernate. To survive the long winter hedgehogs need to be a decent weight and so as the cold weather comes in please continue to put food and water out for them.

Keep an eye out for them this Autumn, remember about leaving some garden debris for them to burrow into, check bonfires etc or why not pop into the Nurseries and buy a house for them to hibernate through the Winter.. There's information about that on the Everton Gardens website too...



EVERTON NURSERIES



Garden Centre

Open every day 9 – 5.30
(Sundays 10.30 – 4.30)
for all your Gardening needs.
Local delivery service for
those bulky items.

Camellias Restaurant

From 9.30 – 4.30 we offer
Tea, Coffee, Cakes and Snacks, and
an inviting choice of lunch dishes
freshly prepared every day.

We are just a short stroll from the village centre via Farmers Walk.
On A337, just West of Everton. 01590 642155

EVERTON POST OFFICE AND VILLAGE STORES

11



Hello friends and neighbours,

We celebrated our first year here in Everton back in June and we were shocked by how quickly that year had passed. Although we are very busy, we love it here and during the Summer have at last had the chance to start exploring this

lovely area that we are now lucky enough to call home.

We really enjoyed our first Everton Festival and tried to join in as many things as was possible. The Summer Serenade was particularly good and was also enjoyed by our visitors. Emma's favourite was the Cream Tea at Old Mellow, I also enjoyed relaxing in the lovely garden in the sun, but for Emma it was more about the home made scones.

Over the Summer as part of our range we introduced local dressed crab and the occasional lobster and we hope to be able to continue that as long as S & J can supply us. In May we brought in local fruit from the New Forest Fruit Company and we have been so pleased with your response. You have all loved it, especially the strawberries (which as I write are still going strong). The downside is though that I have put on weight however I have to admit that it is less to do with the strawberries and more to do with the meringues and clotted cream! I am no Delia Smith but they inspired me to have a go at making my first Pavlova.



Barrie enjoys a good pie and so we are pleased to stock the handcrafted award winning pies from the 'Real Pie Company'. They are already proving to be very popular. The New Forest Bacon Company is based on the Somerley Estate around Ringwood and has been supplying us with

fresh meat which is locally sourced in Hampshire and Dorset. The different recipe sausages and burgers they make, have all gone well over the school holidays and we are now trying to stock a larger variety of meat: beef, lamb, pork chops, steak, venison and more. We are happy to take orders and are hoping this will include Christmas turkeys. I know that for most of you Christmas seems a long way off but we are already selling Christmas lines which include cards, gift wrap and grocery items. New Year calendars and diaries are also now in stock. I am already thinking about the Christmas lights, the tree and what to put into the shop window. We already have a date for the Village Carols outside the shop and hope that as many of you attend, as you did last year, to help make it another enjoyable evening.

The Post Office is updating our equipment next month which will hopefully go without a hitch as we are expecting more customers when Hordle Post Office closes next month. We are still unable to do any DVLA transactions, even though Hordle could. This decision is down to the DVLA.

It is such a shame that the Post Office do not advertise all of the services that we offer because it still does surprise us that many people do not realise they can make free cash withdrawals using their debit card.

You are able to pay cash into many banks using your debit card too: HSBC, Santander, Barclays and the Co-op banks. To pay cash into Natwest, Lloyds, Halifax, TSB, RSB and Yorkshire you will need a paying in slip from the bank. In addition to this we hold the envelopes for cheque deposits for most of the High Street Banks, again you will need a paying in slip though.

Barrie is always trying to find space for new stock (mainly because I order too much!) so we are happy to hear ideas for new items, although we must all remember that the shop is not TheTardis...what a shame!! Albeit early I would like to wish you all a very merry Christmas and a Happy New Year.

Best wishes Carole, Barrie and Emma



EVERTON POST OFFICE & VILLAGE STORES

01590 643055

Shop and Post Office services available

7am-7.30 p.m. MON- SAT

7.30-5 .00 p.m.SUN.

- ❖ Handcrafted award winning pies(Real Pie Company)
- ❖ Locally caught fresh dressed crab
- ❖ Locally sourced fresh meat from the New Forest Bacon Company(special requirements to order)
- ❖ Local bakery bread delivered daily
- ❖ Wide range of groceries, fresh fruit and vegetables. Local New Forest seasonal fruit
- ❖ Regular promotions of wine and beer
- ❖ Stationery and a large selection of greeting cards

EVERTON VILLAGE FESTIVAL 2017

www.evertonfestival.com

A question and answer session
with the Festival Organisers



12

Q: First question then...how long does it take the team to organise the Festival? Six months?

A: A bit longer than that, we start working it all out about September, ready for the following June.

Q: Is it always held during the same week? And why?

A: Yes it is. This has been agreed with other Event Organisers in the area, so as we don't clash with other events. Doing it during this time also means that we fall under the New Forest Arts Festival umbrella and so we can take advantage of their publicity and promotional activities.

Q: That leads me nicely to money...How much does the Festival cost to set up and how is it funded?

A: Last year's Festival cost us in the region of £5000 and that was with careful budgeting! We raised that through sponsors giving financial support, and for that we are immensely grateful to Sean Willson of Hyundai who has supported us from the very start. But we also raise money through the sale of Raffle tickets, entry prices and donations, and then there's refreshment sales and Tombolas. This money all goes into the Everton Community Association's (ECA) account. The ECA act as bankers for us really. They would subsidise the event if necessary as it falls within the Charity's remit, but to date the Festival has always made a small profit, which goes to benefit Everton. So it's win win!

Q: What about the Marquees, gazebos and all the tables and chairs that we see on the Rec every year.

A: We hire the big white Marquees from the Rotary, the gazebos, tables and chairs are owned by the ECA. As are the Art display screens. All of these can be hired for a small donation, by anyone in the Village.

Q: What gives you the biggest headache?

A: The prospect of bad weather!!! But besides that, finding attractions and music that at some point during the week will appeal to someone in the Village. And of course let's not forget putting those Marquees up...

Q: Any complaints?

A: Not really...but some people do question things... mostly because they don't see the Festival as a whole thing, they come along to the Recreation Ground expecting a Fete and it isn't like that at all. We try and keep it all within the parameters of a Festival.

Q: Is this Festival instead of a Fete then?

A: Not at all. We organise this Village Festival because we enjoy Festivals. If anyone wanted to organise a Summer Fete for Everton they could easily do so. Anyone can use the Rec and its facilities. All they need to do is have a word with the ECA, who would help them as much as they help us.

Q: Which part of the Festival do you most enjoy?

A: That's an easy one, when people come and have fun. That makes us all happy!!

The Editor's Notable Highlights (*in no particular order!*)

A Summer Serenade at which the musical performance was sublime and the height of professionalism. The food...

The Photographic Competition: in which the junior section was taken up by Priestlands School and set as a homework Project. There were 16 entries, 3 per young person, all under 15. All of a very high standard. The winning entry and runner up in the Adult comp. which were stunning, will both be used on the cover of the Newsletter.

The Garden Party. The hat competition in which five entrants were given a prize! The party being gatecrashed proved its popularity. The food...the music...

The lovely young lady at the Folk Evening...she of the lyrical voice and the yellow dress. The jazz...the country...the jamming...

The Great Get Together...the wonderful weather and the moment when everyone stood and gave a minute's applause for Jo Cox and the other harrowing events of the previous few weeks in the UK. The teas and cakes...the art, the photography, the music..

The newly hatched Ukulele strummers strumming their stuff along with Empty Frets

Swing Unlimited who brought the Festival to a rousing end...and of course those wonderful musical hats which doubled up as fans on that scorching hot evening!





Music Man Steve Adams

We were really pleased with the village festival in June: pleased because of the quality of the performances and events, pleased because we were blessed with good weather, and pleased perhaps most of all because of the support we received over the course of the week.

Nearly all events were well attended and some very nice comments and positive feedback were received which made all the organisation and hard work worthwhile.

This was our fourth festival and we are learning through experience what

works and what doesn't. The opening classical evening and the closing Swing Band finale were sell-out successes and the musical events in between were well-supported with just a couple of exceptions. Very few people came to the Open Mic night at the club but, despite this, the evening was a lot of fun and very entertaining with a host of local musicians taking turns to perform, often playing together and improvising on the spot. We don't think we advertised the evening in the right way as people may have felt it was just for performers or been concerned that they were expected to get up and sing. Also sadly

the Polly Morris band had little support on the Sunday afternoon at Everton Nurseries. Part of this may have been down to the sweltering weather that day or the fact that it was Fathers Day but as the Sunday afternoon wasn't supported last year either we will have to review that part of the programme.

But overall it was a great week with a wonderful atmosphere throughout the village.

So now we are turning our thoughts to next year and starting the necessary planning and organisation. We feel it is important to keep the festival fresh by trying a few different things whilst keeping some of the events and performers that have proved most popular. As ever we need to manage the finances carefully and we rely on sponsorship and fund-raising via the raffle to cover costs. Although we prefer events to be free we do have to charge entry on occasion to offset the cost of that particular performance so your support through buying raffle tickets and in attending events is a vital part of the process. But your support is not just valued for financial reasons, it makes all the effort that goes into the festival seem worthwhile and helps to promote a collective village atmosphere.

We will update the festival website with information, probably starting in the New Year so keep an eye on www.evertonfestival.com and there will be more details in the Spring edition of this newsletter.



FESTIVAL 2018 JUNE 10-JUNE 17

Photo competition results page 22



2016 WINNING RAFFLE
PRIZE IS STILL UN-
CLAIMED

Number 2110.....Name G.
Leach....

Please get in touch with the
editor if you hold the ticket
or know who does.
We will need identification
and the ticket!



Greetings from St. Mary's church where a very warm welcome awaits you each Sunday at 10 a.m. As well as our more traditional services of morning worship and Holy Communion we have a more informal Family Service on the fourth Sunday of each month aimed at bringing together the whole church family, the young and

not so young, in an act of worship which often includes drama, songs and activities in which even the youngest can participate and discover that learning about Jesus really can be fun.

Our year began with the news that the church hall needed complete re piping for the heating system as the old system had started to leak and was causing damage to the floor. An afternoon of prayer launched an appeal to individuals and organisations in the village who make such good use of the hall. The response was overwhelming and we thank everyone for their generosity which enabled this work to be done.

As part of the Everton Arts and Music Festival a Songs of Praise was held on Crossways Green which was enjoyed by quite a number of villagers in lovely sunshine.

In August we celebrated our Patronal Festival with a Choral Evening and were again blessed to have the St. Nicholas Singers join our own church choir resulting in a very special and beautiful service. Our thanks go to all involved.

Our Holiday at Home in August is becoming an established tradition at St. Mary's. Thanks to a small army of extremely hard working and dedicated volunteers twenty four parishioners, many of whom have been unable to get away, were treated to a holiday in Italy. The transformation of the hall was amazing, complete with a leaning tower of Pisa and everyone enjoyed an action packed two days of games, songs, craft and of course pizza and cornettos!

Harvest this year will have been held on September 24th. St. Mary's support the Send a Cow organisation

which helps impoverished families in Africa. We shall be aiming to raise over £600 in order to provide a family with a dairy cow. This will enable them to have nourishing food, manure to fertilise their crops and eventually a calf to pass on to neighbours and friends. Any non perishable foods will be taken to the Basics Bank which we support throughout the year.

Looking ahead to the autumn our annual Autumn Bazaar will be held on Saturday 21st October. Half the proceeds from this will go to the five missions we support, Tear Fund, Scripture Union, Church Mission Society, Church Army and Mission to Seafarers. There are always lots of interesting stalls, books games, craft, homemade cakes and jams as well as coffee and cake so do make a note of the date and come along.

On Sunday 12th November a Remembrance Day Service will be held in the church at 10.50 a.m. and the two minutes silence will as usual be observed at the flagpole at the recreation ground at 11 a.m. the previous day Saturday November 11th.

Christmas will be fast approaching and a number of special services have been planned to celebrate this joyous festival. Village Carols

will again take place on the forecourt of the village shop. We are indebted to Carole and Barrie for enabling us to have this central location so that so many people can be part of this festive occasion. This year the carols will take place on Wednesday 20th December at 7.30 p.m.

Another tradition at St. Mary's is the Posada Crib which begins its journey around the village on Advent Sunday, December 3rd. Baby Jesus spends each night with a different family, the children eagerly awaiting the crib's arrival, and returns to church on Christmas morning.

A family carol service will be held at 10 a.m. on Christmas Eve followed later by a service of Holy Communion at 9 p.m.

And so Christmas Day dawns and we welcome you all to our short service of celebration at 10 a.m. The church is always full and brought alive by excited children who come to help celebrate the true meaning of Christmas.

On New Year's Eve we usually hold a short reflective candlelit service in the evening followed by refreshments in the hall. In my experience this is a really lovely and thoughtful way to prepare for the year ahead so do look out for information nearer the time as you too may feel you would like to participate in this way.

And on into 2018! The Women's World Day of Prayer will be celebrated at St. Mary's on Friday 2nd March at 7 p.m. This year the service comes from Suriname and whilst it is written by the women of that country it is a service for ALL, an opportunity to learn about Christians in Suriname, their difficulties and their hopes. We would be pleased to see you there.

Looking further ahead to Easter time, the greatest of all Christian festivals, a number of services and events have been planned Palm Sunday, March 25th we invite everyone to join our procession led, we hope, by Morris the donkey and enthusiastic children waving palm branches. Good Friday sees a more reflective procession of remembrance as we follow the cross through the village leaving the recreation ground at 10 a.m. and arriving at the church by 10.30 for a short service followed by hot cross buns in the hall. And that brings us to Easter Day when we celebrate the risen Christ with a service of Holy Communion in the church, with family worship and activities in the hall and no doubt a hunt for Easter eggs!

St. Mary's is a happy, caring church family and we would love to see you at any of these events or indeed any Sunday when we hope you will join us in worship and enjoy coffee together afterwards in the hall.

May the peace of Christ be with us all

Myra Campbell and Joan Cocks, Church Wardens

VILLAGE CAROLS

TO BE HELD ON THE FORECOURT
OF THE EVERTON STORES ON
DECEMBER 20th
AT 7.30 P.M.

Everyone is welcome

CHURCH AND COMMUNITY



St. Mary's Church Hall heating repiping project

All at St Mary's are extremely grateful to the organisations and individuals who gave so generously to support the project to repipe the heating system in the hall.'

The photo shows some of the groups who were so supportive:- Everton Community Association, Everton Bridge Club, Everton and Lymore Women's Institute and the Ladies Evening Group.

Two other groups, who use the hall and helped us, are not in the picture, the Toddler Group and the Music and Movement group.



St Mary's Social Committee

In July we had a very successful barbeque arranged by Mike and Cilla Johnson. It was a fine evening and nearly everyone sat outside and appreciated one of the few warm summer evenings we were able to enjoy this year.

As I write our Harvest Festival is about to take place and then we look forward to our Bazaar on Saturday 21 October. This may have happened when the newsletter comes out but posters will have been around the village.

There will be two opportunities for Christmas shopping, one in a coach and the other in a mini-bus to Stewarts. Posters will be on the garage door.

Our programme for the New Year has yet to be confirmed so watch for the posters on the garage door or contact me.

John Wigglesworth

Everton Toddlers

- a friendly, relaxed group for under 5s and their grown ups.

Looking for something to do with your baby or toddler on a Wednesday morning? Why not try coming along to St Mary's Church Hall in Everton?

Every Wednesday during term time mums, dads, carers, toddlers and babies meet together to enjoy playing with the toys, meeting friends, chatting, sharing in 'snack-time', painting, sticking, squigging play dough, climbing through tunnels (the grown-ups don't quite fit), singing and having a great time.

The session costs £1 per family.

Everton Toddlers

Place: St Mary's Church Hall, Branswood Close, Everton
SO41

Day: Wednesday (term time only)

Time: 9.30am-11.30am

Tuesday mornings at St Mary's

Friendship Coffee...From 10.00 to 11.30 every Tuesday (except 3rd Tuesday of the month.) Everyone is welcome. Coffee/tea and biscuits and a chat.

Friendship Lunch...3rd Tuesday of every month. Freshly cooked two course lunch preceded by short church service at 11.45 a.m.

Lunch is served at 12.15 and costs £3.50. If you might be interested in coming along please contact Gillian to be put onto the reserve list.
Gillian 644739

CALL AND GO'

OFFERS A MINI-BUS SERVICE FROM YOUR HOME TO THE SHOPS FOR THOSE WHO FIND IT DIFFICULT TO USE THE NORMAL BUS SERVICE

We operate to Lymington on Tuesday Mornings and New Milton on Friday mornings.

For further details please ring the

NEW FOREST VOLUNTARY SERVICE 01425 482773

HOLIDAY AT HOME

16

Much, much earlier this year, a group of adventurers met at St Mary's church hall to discuss possible holiday destinations. This needed to be kept top secret because the destination had to be a surprise for the holiday makers. It was, of course, the preliminary meeting of the St Mary's Holiday at Home team

After considerable discussion and wild ideas being thrown around, it was agreed that this year we would take our guests to Italy. That's when the fun really begins! What do Italians eat? What do they sing? What games do they play? What dances do they do? There was plenty of research to be done.

By the time we gathered for our next meeting, a few ideas and plans had been drawn up and a rough itinerary was drafted. Sadly some of our more outlandish ideas didn't come to fruition - pizza throwing demonstration; ice cream vendor on a bicycle; Pavarotti singing, but we still had plenty of scope.

Vera, Joyce and Judy got busy sorting out a *bellissimo* menu for two days in Italy; Barry and Judy researched some suitable songs to entertain us; Gillian found some film of folk dancing the tarantella for us to copy; Reg, Beryl and Ben got cracking on the scenery. We even managed to track down a copy of the original film with Michael Caine in 'The Italian Job'. Some games were 'invented', including gondola racing, pinning the smile on the Mona Lisa and javelin throwing.



When the day came for us to go on holiday, the team welcomed 24 guests to join them for two days of fun, food and entertainment in St Mary's, which had been decorated in Italian style, complete with a leaning tower of Pizza, a centurion on guard at the Colosseum, plenty of Italian flags and our very own attempt at Michael Angelo's David. (And, of course, a spaghetti tree!)

Guests and team alike had a couple of days full of laughter and companionship with some creative craft projects, dancing, quizzes, singing and lots and lots of eating. We were sorry when we had to say goodbye to 'Italy' and come home to Everton.



I wonder where we will go next year? Watch this space...

Beryl Odbert

NEW MILTON

SOUND & VISION

TELEVISION & AUDIO

REPAIR CENTRE

FREE ESTIMATES
ON ALL REPAIRS!

OLD MILTON ROAD, NEW MILTON

01425 620520

WWW.NEWMILTONSOUNDANDVISION.CO.UK

Lymington's

Carpet Store

01590 643974



Hordle voluntary care group

17

Covering Tiptoe, Hordle and Everton

0845 388 9063

www.hordlevoluntarycare.org

Do you need to get to a medical appointment?

Hordle Voluntary Care Group would like to help you. We will pick you up from home, take you to your appointment and return you to your home afterwards. We also provide transport for relatives to visit in-patients if they are unable to get to the hospital using public transport and to the 'bathing service' available in our area.

All you need to do is call our Coordinator, Margaret, on 0845 388 9063. Please leave a message and if she is not available to answer the phone she will get back to you on the next working day. Please give as much notice as possible as this is more likely to enable us to find a driver for you.

If you are unable to use a 'bus pass' you may be eligible for Travel Vouchers from Hampshire County Council. You can use these for our service and if you wish to have more information please call Margaret on the above number.

Can you help us and those in your community?

Are you looking to help in your local community?

Would you like to know that you are making a difference to someone who needs help?

We would like to increase our pool of drivers so we can help more people get to their medical appointments.

If you can spare a couple of hours a week then we would be very pleased to hear from you.

For more information please look at our new website www.hordlevoluntarycare.org.uk, contact Ian Chislett-Bruce on 07980 268318 or email hordle.care@btinternet.com for further information.

Hordle Festival Fete

As usual Hordle Voluntary Care Group had a stand at the Hordle Festival on Saturday, September 2nd. Ian Patterson set things up and he, Brian Curwain, Anne Munroe, and Margaret were in attendance at various times in the afternoon.

We met several of our clients and their family members and were also able to promote our services to other festival-goers. We are likely to gain a couple more volunteer drivers as a result of this. Our usual peg-board game ensured that we made a small financial profit on the day.

Clients Tea Party

Over 40 of our clients attended the annual tea party in the Hordle Community Pavilion on September 6th. The food, purchased from Oakhaven Kitchen caterers was excellent and both clients and our drivers enjoyed the quiz, provided by our coordinator, Margaret Maggs, who, along with our volunteers, Anne Munro Carole Manning-Mills also staffed the kitchen.

We look forward to entertaining some of our clients again next year.

Car Cane Mobility Device

All our volunteer drivers have now been supplied with a car cane mobility device which will provide extra support for those clients who need help to get in and out of car. We are very grateful to Hordle Parish Council who provided the funding for the devices.



MOTOR SERVICES LTD



Units 8&9 Lea Green Farm,
Christchurch Road,
Downton, Lymington,
Hampshire SO41 0LA

Tel/Fax: 01590 645999

Your leading pet care provider



Our professional and friendly team offers you the best possible care for your much loved pets.

If you're looking for help with dog walking, home boarding, day care, cat or small animal home visits then please get in touch.

Simply call us on 01425 612 061, we would love to hear from you.

Call us on 01425 612 061
email walkies@sophiespetcare.com
www.sophiespetcare.com



Our Post Master Barrie may feel a Little Challenged in late Autumn.

18

At the end of September St.Mary's Church are having their Harvest Festival. This year we are raising money to send a cow to Africa. The question is will the lovely Barrie be able to rise to the occasion?

Sending any parcel (as we all know) through the Post Office elicits a number of questions first class, second class, recorded delivery, special delivery, parcel force, 24 or 48, air mail, normal mail? Country of origin and value of the package, destination.Barrie does ask so nicely...

But above all...will the package meet all safety requirements...does it contain fuel, sharp instruments, gas cylinders, if it has batteries, are they attached? Is it in the original packaging and will this packaging meet the Post Office regulations? Hmmm gas!!! Where will the stamps go?

Will Barry's normal sense of humour desert him?

We wait with bated breath...

Anne Cockburn



These tyres were spotted on Wainsford Road earlier this year...the sign reads 'Free, please help yourself!' We have it on good authority that these tyres had been illegally dumped and were awaiting collection by NFDC. The writer of the sign, of course, was making a humorous point...You can imagine our surprise on passing the next morning to see that a fair few of them had gone!



Set alongside the river Avon, The Mill is the perfect place to relax with family and friends, enjoy delicious homemade food or unwind with a peaceful stay in one of its twelve stunning bedrooms.

Located not far from the town of Lymington, our exquisite food and tailored menus allow you to have a dish you will never forget. The Mill makes all food onsite using local and seasonal produce.



info@themillatgordleton.co.uk
01590 682219 SO41 6DJ

COMPUTER TUITION FOR ADULTS

Including Absolute Beginners!

All Versions of Windows, iPads and iPhones
1-2-1 in the Comfort and Convenience of Your Own Home

Learn to do exactly what you want and need on your own computer or iPad with step-by-step teaching at the perfect level and pace for you!

- ✓ **The basics - let's get you started!**
- ✓ **Emailing and the internet**
- ✓ **Creating documents**
- ✓ **Online Shopping**
- ✓ **Photos - organise, edit and print your pictures**
- ✓ **Pre-purchase advice and new set-ups**
- ✓ **Computer troubleshooting, password problems, help with internet services**
- ✓ **Much, much more!**

I am an experienced, friendly and very patient teacher and can provide references from many happy learners.

Please call Juliet Lynn on: 01590 677726

www.julietlynn.com

info@julietlynn.com



WRAP UP FOR WINTER

19

By 'not a fashionista'

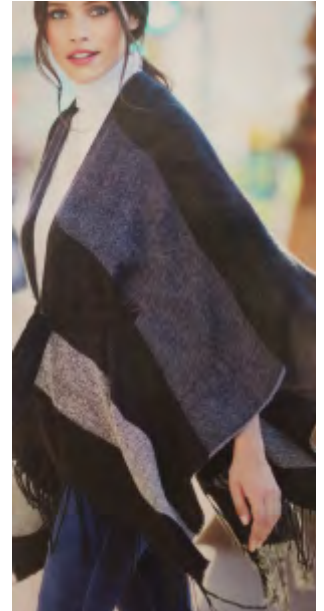


Sad to say that, after a typical English summer of a few blisteringly hot days followed by mostly inclement weather, the evenings are now drawing in, although I welcome the crisp bright mornings that Autumn brings.

When I was a child Autumn term was the time to don the short sleeved wool vest and the liberty bodice', a thick sleeveless cotton garment that bore no resemblance to 'liberty' at all!

Layering is today's fashion term for this but modern technology has produced much softer breathable fabrics like viscose and

modal which add less bulk and are kinder to the skin, so, we might start with a simple tank top, a gilet or the very fashionable bomber jacket paired with skinny jeans, leggings or straight legged trousers, knee high or sheepskin boots and you can finish the look with a wrap or a poncho.



The pastel shades and florals of the Summer have deepened into forest greens, deep rose, burgundy, chocolate and greys, but, if you want to make a real statement red is the colour of the moment.

This season it's all about the sleeve, cold shoulder is still around, but slit tulip sleeves caught together in one or two places are also in the spotlight, as well as tight sleeves finishing in a flounced bottom. These all look good with a pencil skirt and killer heels.

Now I know I shouldn't really mention the 'C' word, but the Christmas cards are on sale which means the party season is rapidly approaching. Time to check on that LBD(little black dress) in the back of the wardrobe. Think it's been to too many parties? Well, here is a little tip...change your jewellery! A long chain with a large pendant, a rope of pearls, sparkly dangly earrings, it really will make a difference.

Clothes by M&CO

Catchphrase of the Season 'Get ahead ...Get a hat' (and maybe a faux fur!)



TIME & TIDE

LADIES FASHIONS



25 High Street, Milford on Sea
Lymington, SO410QF
01590 644486

Open Monday to Saturday 10-5

www.timeandtidefashions.co.uk



BACK ON DRY LAND...

THE YACHTING ADVENTURES OF TWO EVERTON SAILORS. *By Elizabeth Kempe*



As regular readers will know - this year we moved our lovely green yacht - The Kingfisher - to her new swing mooring up the Beaulieu River near to

Baileys Hard. Here it is very peaceful and the wooded banks are a joy to behold, birds everywhere, fish jumping and jellyfish brought in and out on the tide. Even saw an otter one day.

The move from Christchurch went

well, the marking buoys at the harbour entrance were put out just after Easter so we sailed round to Beaulieu on a fine sunny day with no mishaps, and picked up our new mooring - No 220. We are happier here, there are no tidal constraints which means that we can go out sailing whenever we like and the idyllic location means that it is a great place just to go and sit and picnic on the boat, or take her for a leisurely trip to the mouth of the river and back again - an ideal excursion for slightly nervous friends who want to go out on a boat but no scares thank you.

People have always said that if you can sail on the Solent you can sail anywhere, and I did not quite understand this till this season when we have experienced the most extraordinarily sudden and alarming changes in wind direction and general sea conditions. At the mooring it is calm and water seems oily with summer contentment - a couple of miles later and we emerge into the Solent from the river and it is blowing a gale, first from South West then North then East. To put the sails up one has to 'go into the wind'. This is my job, but is very difficult to do when the boat is tossing around and the wind keeps changing direction. And I am so afraid the Captain will fall into the sea as he clings to the mast and tries to manually haul the mainsail up at the same time as I am going round in circles trying to get eye to eye with those elusive gusts. Did you see that little green boat head out, put the mainsail up, take it down and retreat back up the river? Some sail that was! But I have had to admit that I am frightened of too much wind and wave, and it is no pleasure to spend your afternoon braced against an unruly tiller, dreading having to change direction (tack) and getting soaked into the bargain. All the time trying to control the stupid trembling of limbs and tendency to weep.

Now I am (as usual) exaggerating somewhat, but anyone who sails will know what I mean. There are good times and horrible times.

A happier note: We sailed round the Isle of Wight last week. On a beautiful (calm) evening we sailed over to Yarmouth, had fish and chips on the pier watching the sun go down and very early next morning headed out of Hurst Narrows, round the Needles, St Catherine's Point and so on all the way back to Beaulieu the same day. Eleven hours. The only scary moment being directly in line with a container vessel, the size of four bungalows. We moved rather quickly out of its way, the chart told us that he had no right to be there but who was going to argue with that! The trip was fantastic, weather gorgeous, blue sparkly seas, wide open skies. How exciting to be the other side of the Needles. We were very happy, and so pleased we had done this. I have been putting it off since we have had the boat! (I told you I was a scaredy cat).

I caught NO mackerel this year.

20

The Shipping Forecast

The unique and distinctive sound of these broadcasts has led to their attracting an audience much wider than that directly interested in maritime weather conditions. On 24th August 2017 Radio 4 celebrated the service's 150th anniversary. (Wikipedia)

One Everton resident was equally inspired, all 31 areas are included...

Not the Shipping Forecast!

The Shipping Forecast has been much parodied in its time So herewith another contribution in rhyme.

Bailey... Fair Isle... Dogger... Wight
Humber... Shannon... German Bight.

In Southeast Iceland bitter winds blew
And heavy squalls soaked the Fisher men through.
Mountainous seas and sleet in Lundy
Were forecast to last from Friday to Monday.
Bailey... Fair Isle... Dogger... Wight
Humber... Malin... German Bight.

Coastal vessels brimming with lumber
With engines throbbing from Tyne to Humber
Set a true course via the Irish Sea
So the crews would be home in time for tea.
Bailey... Fair Isle... Dogger... Wight
Humber... Fastnet... German Bight.

King crab and lobster were netted in Sole
And cooked that night in a casserole
By tired seamen brought to their knees
While striving to reach the Hebrides.
Bailey... Fair Isle... Dogger... Wight
Humber... Portland... German Bight.

A great sperm whale swimming ever nearer
To the area known as North Utsire
Was caught by the surf and the very next day
Found itself washed out to the bay of Biscay.
Bailey... Fair Isle... Dogger... Wight
Humber... Dover... German Bight.

Where typhoons rage and come to blows
With deep depressions in Forth and Faeroes
Where an anticyclone in the mouth of the Thames
Will confuse a Viking with stratagems.
Bailey... Fair Isle... Dogger... Wight
Humber... Plymouth... German Bight.

The end of this forecast draws ever nearer
No high pressure warning for South Utsire
But the Meteorological Office, in a very strange ploy,
Altered Finistere and renamed it Fitzroy!
Bailey... Fair Isle... Dogger... Wight
Humber... Forties... German Bight.

The region of Trafalgar a most prestigious name
Made famous by Lord Nelson of seafaring fame
Is far from Cromarty named near last of all
Which leaves nothing to say... absolutely Rockall.

* * * * *

A Word from Dingle Dell...



We slide into Autumn and the days are shortening, and with it the pressure to build on green belt land seems to have subsided. We wonder for how long, as since the treasury took over planning about 15 years ago there has been total unsustainable sprawl which will leave a toxic legacy for the future; however in Everton we breathe a sigh of relief for now.

This has been a grim year for wildlife although our local badgers are safe for now, unlike those in 11 counties with a target kill of 32 000 on top of the 50 000 that are killed annually on the roads plus another 10 000 that die from persecution. Defra tells us that £100 million is paid out in compensation to farmers for the 40 000 cattle that are slaughtered each year, however careless cattle movement and lax farm hygiene would seem to play a big part in the lack of control of the disease plus a bTB test which is unreliable as it does not pick up 25% of cattle with bTB. A change of government will be the only saviour for Brock as this one is hell bent on the destruction of the badger with many wealthy landowners in their ranks. £40 million has been spent on culling so far with each badger costing £6800 as against the cost of £82 for vaccinating a badger. To add to this incongruity the culled badgers are not even tested to see if they had bTB.

The fox is holding his or her own and the brown rat too, though it is not as common as people would have us believe with an estimate of 10 million. It would seem that the old saying of you are 'never more than six feet from a rat' is a myth. The mole has been in decline from the year 2000, however since the ban on strychnine in 2006 their population is on the up.

Water voles are history now and both Avon water and Dane stream are dead zones with no aquatic life of any sort. Fifty years ago there were trout, minnows and stickleback plus a good population of kingfisher and sea trout in season. As one of the local lads good fishing was to be had, so what has happened? Nitrate run off and general pollution seem to have taken their toll and sadly the days of hearing the plop of a water vole diving into the river are no more.

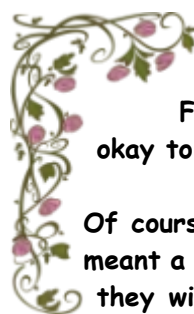
There do not seem to be so many squirrels now either. The grey species was introduced from North America in 1876 and took a hold, it did not kill our native reds but it was better at both breeding and finding food and also carried an affliction known as squirrel pox which does not harm the grey but kills the red. Beatrix Potter's Nutkin was a red and Timmy Tiptoes was a grey. Interestingly in France there are only reds as the grey was never introduced.

The House Martins and Swallows will be away now after rearing their young. They too are in trouble regarding nest sites, as in the South everything is so tidy, with old barns being mostly refurbished as holiday lets. This of course is where swallows would have nested. Houses have become so well insulated and constructed with modern materials, this development has not helped the Martins as their mud nests do not adhere well to plastic fascia and soffits.

Lymington used to have a large swift population between May and early August when they arrived here to breed, however this has reduced in numbers over the years with now half the number screaming through the summer evening skies above the town. Again they are the victims of modern building construction. However to end on a happier note, the conservation group, Hampshire Swifts are doing good work by putting up swift boxes where they can. Who knows, Lymington could one day emulate Exeter, a town which has erected a Swift tower providing multiple nest sites for these birds.

Hedge Grub

Grapevine



Forget the Autumn colours - when is it okay to start eating the Christmas chocolates?

Of course this season of mellow fruitfulness has meant a flurry of chutney and pickle making - and they will all be ready for Christmas. And then there's The Cake....

Everton Post Office is on an App! And such a life saving app it is too. It is a free download from NHS SCAS(South Central Ambulance Service) called 'Save -a- life.' It shows the nearest Defibrillator to your location and also shows critical first aid information that is easy to understand if you are in a panic.



A big 'Hello' to the new residents of Everton who have moved in over the Summer. There is an interesting list on the back cover that shows the diverse opportunities here...all participants and organisers will make you very welcome. It's also a good idea to keep an eye on the shop shed door for 'what's on' information.

Thankyou to all those helpers who turned up on the Recreation Ground on Saturday June 17th, unasked, to help set up for the Festival's 'Great Get Together.'

Your help and willingness was much appreciated.

Now please pass the chocolates...

Grapevine



A Bouquet to Angie Hockham

Who at a 50's themed afternoon tea raised over £350 for the charity Simon Says!
Well done Angie!!



THE EVERTON NEWS QUIZ

1. In cricket, what does MCC stand for?
2. In insurance, what is the difference between Insurance and Assurance?
3. How many motorways in Hampshire?
4. What is the spelling of the name of the major golf course in Brockenhurst?
5. What is a Ha Ha?
6. Who first wrote the Bible?
7. What is the registered trademark on all Peugeot cars? It is on all of their cars ever made, even to this day.
8. What is a procrastinator?
9. R.M.S. Queen Mary and Elizabeth. What do the initials stand for?
10. What is a Bakers Dozen?
11. The MG Sports Car. What does MG stand for?
12. Where does 'Back to square one' originate from?
13. How many lakes are there in Scotland?
14. Which was the first British car to achieve One Million Sales?
15. What very famous building is in Threadneedle Street, London?
16. What was the name of the Greek designer of the original Mini?
17. What was the origin of 'money for old rope'?
18. What is the sweetest sound in a person's ear?
19. What is the 'Blue Riband'?
20. In banking, what does HSBC stand for?

Answers below

Tony Rickard

Festival 2017 Photographic Competition

The Adult winning photograph is featured on our front cover. It's called 'Breath of Spring' and was taken by Matt Roseveare who is only 18 ears old!! Clearly someone to watch. Matt was awarded the Runners up prize as well and you will be seeing that photograph in the future.

Our Junior Winner, Holly Ward, and Runner up Grace Hobby, were both from Priestlands School and they will be featured in forthcoming editions. You can currently see all of these photos, plus any updates on the Festival website.

www.evertonfestival.com

12. A numbered grid in the old Radio Times for football commentary
11. Back to square one would mean the ball has been passed back to the goalkeeper. He then kicks it out to square three and so on.
13. One lake and hundreds of lochs.
14. The Morris Minor.
15. The Bank of England.
16. Alec Issigonis. A Greek engineer who designed many great English cars.
17. Very old rope sold to shipbuilders to stuff into the holes on wooden decks.
18. The sound of their own name.
19. The reward for the fastest passenger liner to cross the Atlantic Ocean.
20. Hong Kong and Shanghai Bank.

1. The Marylebone Cricket Club. A district in London.
2. Insurance covers you for something that might happen. Assurance will happen. ie. A car accident might happen. Death will happen.
3. Three. M3, M27, and M271.
4. Brockenhurst. Does anybody know why?
5. A sunken boundary in a park or garden.
6. Moses.
7. The zero in the model name. ie. 201, 504, 307, 106 etc.
8. A person who puts off something until tomorrow which should be done today.
9. Royal Mail Steam Ship.
10. 13 loaves of bread, in older days this was to ensure 12 loaves.
11. Morris Garage. A garage that increased the speed of Morris cars.

Answers to Quiz





Barry Frampton

Gas - Plumbing - Heating - Renewables - Electrics

01590 678223

www.barryframpton.co.uk

- Everything All Under One Roof
- Worcester Bosch Accredited Installers
- 10 Year Warranty on Parts and Labour
- 0% Finance Available on New Boilers
- Solar Electricity Storage Systems Available
- Full Bathroom Design & Installation
- Established for over 25 Years



Old Codgers' Corner

(column for those of a certain maturity)

23

Frog parking only – all others will be toad.

This bloke threw milk over me – how dairy?

What happens if you get scared half to death twice?

I was addicted to the hokey-cokey but I turned myself around.

Went to the air and space museum, but there was nothing there.

Hold the door open for a clown – it's a nice jester.

All those who believe in psychokinesis raise my hand.

Between two evils I always choose the one I haven't tried.

Cure for an obsession: get another one.

I child proofed my house, but the kids still get in.

Ban pre-shredded cheese and vegetables – make Britain grate again.

If attacked by a mob of clowns go for the juggler.

The past present and future walk in to a bar. It was tense.

A clear conscience is a sign of fuzzy memory.

"Age is merely the
number of years the
world has been
enjoying you."

Unknown



Activities in Everton

Please note that all the Everton contact numbers are prefixed with the area code 01590

Acorn Pre-School	Pavilion.Mon-Fri a.m.....	Jackie May 644648
Alzheimer's Group.....	Church Hall,tea, 2nd Thurs,	Nicki Gordon 02380 610159
Bridge Club.....	Church Hall, Tues 6.40.pm.....	Bob McConnell 670940
Church Social Cttee.....		John Wigglesworth 642556
Contemporary Dance.....	Church Hall, Thurs p.m.....	Valerie Farrant 01425 613979
Everton Community Association.....	All villagers are automatically members.....	Pauline Breeze 641847
Everton&Lymore Club	Old Christchurch Road.....	John May 643865
Friendship Lunch.....	Church Hall	Gillian Peard 644739
Hordle Voluntary Group.....		Ian Chislett-Bruce 01425 614174
Ladies Evening Group.....	Church Hall 1 st Monday 7.30 p.m.....	Carrie Kaye 644252
Multiple Sclerosis.....	Church Hall 3 rd Monday p.m.....	Soophy Knight 623118
Music & Movement.....	Church Hall, Thurs a.m.....	Cynthia Wilson 622488
Pilates.....	Church Hall, Wed.p.m.....	Diana Steer 01425 610756
Pop-In Coffee.....	Church Hall., Tues a.m.....	Gillian Peard 644739
Ramblers.....		Mervyn Hughes 642509
Table Tennis Club	Church Hall., Friday p.m.....	Gillian Peard 644739
W.I.	Church Hall , 3rd Wed. 2.30 p.m.....	Renee Edwards 641656
Yoga Class.....	Pavilion Monday 6.00 -9.00 p.m.....	Dererca Sprake 675695
	Wednesday7.30 - 9-00 p.m.....	Hanna Evans 07913108401
Art Group	Pavilion 2.00 - 5.00pm Thursdays - ..	Diana Collard 643550
Art Group.....	1st Sat every month 9.30- 4.00.....	Karolyn Williams 01425 622012
Art class with teacher.....	Church hall, Mondays 10am to 12, 1pm to 3pm.	
.....		Heather Jolliffe 07545 973870

If there are any corrections or additions to the above list please let me know - Editor
 Editor: Cheryl Fillmore, 7 Frys Lane, Everton.,
 SO41 0JY Tel: 01590 644865.
 cherylfillmore@hotmail.com

**EVERTON VILLAGE
WEBSITE ADDRESS**

www.everton-lymington.co.uk

**Advertise YOUR
Business with US**

**If you would like to place an
advert,**

Please contact cherylfillmore@hotmail.com
 Cheryl Fillmore 01590 644865