

EVERTON NEWS

Everton Community Newsletter Spring 2013

PARTY IN THE PARK 2013

MONDAY MAY 6TH...

It's THE SIXTIES, THE DECADE OF
SHORT SKIRTS AND FLOWER POWER...



ORDER OF EVENTS

- | | |
|-------|---|
| 12.30 | Vintage Car procession leaves the Triangle |
| 1:00 | Cars arrival with commentary by Toby Sears |
| 1.15 | Official start of the Party |
| 1.20 | Out of the Woods...Swinging into the decade |
| 2.30 | Total Voice...songs from the Sixties |
| 3.20 | Magic Moments in Time |
| 3.40 | Out of the Woods... including the 'Grand Raffle Draw' |

Come along to the Everton Recreation ground and enjoy a Village event for all the family, There's free entertainment for everyone...and all to the Fabulous sounds of the Sixties! From 12.30 onwards...

- | | |
|--|---|
| <ul style="list-style-type: none">• Vintage Cars• Hog Roast,• Beer Tent,• Refreshments, | <ul style="list-style-type: none">• Art and Craft displays• Quizzes, Treasure Hunt,• History of Everton exhibition,• Bouncy Castle and Children's games, |
|--|---|

Everton Community² Association

Chairman's Letter

Dear Members

The AGM was held in December last year and a thank you to all who attended. It was decided that this year's AGM will be held on a Monday rather than a Saturday, to encourage more people to attend. A copy of the minutes of the AGM is posted on the village website in the ECA section.

Cheryl and Sandra are well advanced in their plans for this year's Party in the Park on May Day. It will have many of the best bits from last year again, plus some added surprises. If you can help on the day or before, please contact them at the PO. Even more important - turn up on the day! If it is half as good as last year's triumph, it will be a wow.

Paul White is making strides in reintroducing Neighbourhood Watch to Everton. He has the help of Janet Durrant, who was involved in the early days of the Neighbourhood Watch and Crime Stoppers in London. They have produced a form, which is being circulated with this Newsletter, to assess interest from people in the village. Please respond quickly so that we can get this off the ground. (see page 22)
See you all at the Party in the Park

Bob Cockburn (Secretary)
(for Vera Peters)

Village Website

The website has been up and running since last November and can be viewed at

www.everton-lymington.co.uk

At present there are 9 sections, covering many aspects of Everton life. It is very flexible and can be expanded or modified as required.

Past Newsletters, AGM minutes and all the pictures from the Party in the Park are available on the site. Local events can be advertised for free on the site and there is plenty of room for suggestions, comments, etc. Also, any corrections or additions on factual detail would be very welcome, particularly if you have any photos of old Everton. If you want to make any contribution, go to the "Contact Us" page on the site.

We would really like to know what you think!

1960

**JFK GOT HIMSELF ELECTED AS THE
PRESIDENT OF THE UNITED STATES.
ELVIS HIT THE UK AND NORMAN BATES.
WENT INTO THE HOTEL BUSINESS**

NEW MILTON **SOUND & VISION**

Television . DVD . Audio
Sales & Service .

**ALL MAKES
ALL MODELS**

FRIENDLY, HELPFUL STAFF

TEL: 01425 620520

**127 OLD MILTON ROAD
NEW MILTON**

R T SEARS

CARPENTRY & MAINTENANCE

**Your local tradesman in Everton, over 25
years experience in the building trade,
providing a polite, reliable service for
Everton residents. Free advice and esti-
mates, fully insured**

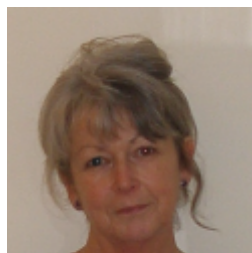
Services include:-

**Doors and locks repaired or replaced in
the house or garage, soffits, fascias, gutter-
ing, roofing repairs, shelving, picture
hanging, tiling, tap repairs and replace-
ment, kitchen and worktop fitting, bath-
rooms, wood flooring, UPVC doors and
windows repaired, double glazed units re-
placed, fencing, gates, paving etc.**

**Phone to arrange an estimate
01590 644269 or 07790 533619**

Roylea, 46 Wainsford Rd, Everton

Editor's Musings ³



Dear readers,
I thought we'd all seen enough of the results of the endless wet weather this year and so I've decided not to

print any of the flooded hinterland around Everton...I'll just leave it to Rain-man to fill us in, instead!

However, although it doesn't feel much like it as I write, Spring is on its way and with it comes this year's Village Celebration which is to be held on May 6th. Details can be found throughout the Newsletter...It's themed 'the 1960's' and if you're wondering, the format is similar to last year...but better! Please support this event, it's great for the Village to get together...

The 1960's....much as I don't like to say it, was a long, long time ago ...

So to jog your memory and get you in the mood...I've scattered a few little reminders of just what did happen throughout that magic decade ...

The Newsletter records of our Jubilee Celebration are now held (along with all other celebrations that took place in the County) in the Hampshire Record Office, Winchester. I was really

delighted to receive a request from them that we send future editions of our Newsletter to be archived. No doubt about it...we're in for prosperity now!

Have you managed to have a look at the website yet? I'm really thrilled to see the photographs throughout the Newsletters in colour, so a very big thank you to Dave Miller and Bob Cockburn from me for getting this up and running.

And what about the exciting new play equipment that is now available for us all to use on the Recreation Ground!! If you haven't seen it yet, there will be a golden opportunity for you when you come to the Party in the Park! (All ages...hmmm I shall no doubt be having a go on the Flying Fox myself!)

Finally my apologies (once again) for the numerous typos in the last Newsletter. My thanks go to Barbara Clark and indeed to everyone that stepped forward and offered their services as proof reader, hopefully this time round, the Newsletter should be a lot less irritating to read.

Fingers crossed then for the Spring, and I hope to see you all at the Party in the Park!
Ed.

Inside This Issue

ECA News page.....	2
Editorial.....	3
Village news.&	
Parish Council....	4&5
Post Office.....	
Weather watch.....	7
Village Groups..	8&9
Cookery.....	10
Hordle Care.....	11
Party in the	
Park.....	12
Everton Pavilion..	13
Local Lives.....	14
Hordle Gardening	
Club.....	15
St Mary's	
Church.....	16&17
Dingle Dell,&	
Grapevine.....	18
St. Barbe.....	19
Arts.....	20&21
Neighbourhood	
Watch.....	22
H.P.C.....	23
Activities.....	24

Reference for 1960's clips
www.bbc.co.uk/cult/ilove/1960

The 119 Bus

A sort of a bus timetable...

Kindly compiled by
Barbara Runham at the request of the Editor.

There is a bus which now goes through Everton daily except Sundays.

The times are as follows:

The Lymington bus leaves The Old Christchurch Road/Everton bus shelter at 9.30, 10.30, 11.30, 12.30 and 1.30 past the hour.

The return journey from Lymington leaves the bus station on the hour from 9.00am until 2.00 pm.

The bus to New Milton leaves the Everton bus shelter/Old Christchurch Road at 9.21, 10.21, 11.21, 12.31, 1.21 and 2.21pm.

The return journey from Whitefield Road, New Milton is again hourly at 9.10 through to 2.10pm.

We hope you find this helpful!

The Editor, Printers and Hordle Parish Council do not take responsibility for the information given or views expressed in the Everton Newsletter. Nor is any culpability accepted in the work done by advertisers.

Advertise YOUR Business with US

If you would like to place an advert,

Please contact cherylfillmore@hotmail.com
Cheryl Fillmore 01590 644865

Out and about by Hordle Parish Council

NEWS FROM THE WOODS.

Golden Hill Woods on Ashley Lane.

A tree survey in Hordle parish, undertaken by the New Forest District Council, identified tree works at Golden Hill. Roadside and high climbing work was undertaken by NFDC contractors but all other work has been carried out by the Golden Hill Volunteers with Paul Dennis the Parish Council's handyman. Further work is progressing to open up areas of woodland to promote natural growth and to exclude non indigenous plants. In March the Wildlife and Countryside Act impacts on further work of clearance. This is to ensure birds can nest in peace. On that note I am informed that a Gold Crest was spotted by volunteers recently. Further events at the Golden Hill Woods are to include an amphibious survey in March in partnership with the National Park and later in the Spring/Summer flora and fauna studies. Enthusiastic volunteers required, training given. Further works under consideration are fence and gate repairs. Help needed.

GET FIT, KEEP FIT AND HAVE FUN.

Everton Recreation Ground

I am very pleased to announce the completion of the new equipment installed over the winter months (no easy task for the contractor). A 20m long aerial runway, large ten way fitness unit and six (some doubles) fitness items have all been installed and will hopefully be up and running and well used in the Spring/Summer. It is hoped to provide the same equipment at the Hordle recreation in the spring. Equipment has instructions on use and guidance on suitability for users. Enjoy this new facility but don't over do it.

VOLUNTEERS REQUIRED

Volunteers are required for a spring clean work party in Hordle. Please contact the parish office.

PARISH ASSEMBLY

To be held on the 23rd April 2013 at 7.30pm at the pavilion, Vaggs Lane, Hordle. This is your opportunity to come along and meet your councillors. Various organisations will be represented on the evening to present information and give advice about many of the groups and events that happen in and around your parish.

Everton Property and Maintenance and Electrical Services



**ALL THOSE JOBS YOU NEVER SEEM
TO GET AROUND TO!**

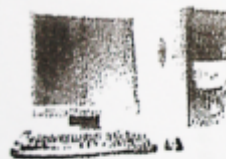
**New Fuse/trip Board
Electrical Work
Property Maintenance
General D.I.Y.
Portable Appliance testing
Paul C. White**

Tel: 01590 644833 Mob: 07967 336830
29 Firmount Close, Everton, Lymington

K.W. COMPUTERS

Home Repair Service

**For All Your PC Problems
Hardware & Software Repairs
Virus Removal - Laptop Repairs
Upgrades - Networking**



Data Recovery

**Systems Built
To Your Specification**

**Reliable Friendly Service
FREE CALL OUT**

**Ken Woodford
Tel: 01590 679091
Mobile: 07789065693**



Village Design Statement – update February, 2013

In the early part of last year the second preliminary Draft document was submitted to both of the Local Authorities, New Forest National Park Authority and New Forest District Council, for comment from their respective Policy and Plans teams and the Transport section at NFDC. Both Authorities conducted comprehensive reviews, responding positively to the document and pleasingly, both parties are happy to eventually having it accepted as a Supplementary Planning Document subject to a number of amendments.

The VDS team re-worked the document to satisfy the Authorities requirements and taking the opportunity for updating where some changes in the Parish have already been made such as traffic layout and signage in the Parish.

The comprehensive document, designed to provide guidance to anyone contemplating development within the parish, is now at the editing and consulting stage in conjunction with the Local Authorities. The VDS team, have continued re-working the document by means of producing Editing Papers, which record our responses to the suggestions and requirements of the Local Authorities. These proposed revisions have already been viewed by the National Park Authority and helpful suggestions have been received. New Forest District Council indicated to us that they are expecting to conduct their review during March. Once we have agreement from both Authorities, final fine-tuning and insertion of the revisions into the document, should result in the VDS taken forward for Public Consultation, a mandatory period of six weeks, supervised by the Local Authorities; then further fine-tuning if required before publication.

Members of the community are encouraged to view the latest Draft version which is available at the Parish Council office together with the Editing Papers. If you wish to make any comments, please do so in writing to the Parish Clerk. Any comments which are provided may then be taken into account by the VDS Working Party during the on-going editing procedure. You will, of course, have a further and final opportunity to comment during the period of public consultation.

Ken Wells

Chairman, VDS Working Party of Hordle Parish Council

**1961 RUSSIA PUTS THE FIRST
MAN INTO SPACE.
AUDREY ATE BREAKFAST AT TIFFANY'S
AND A DIRTY GREAT WALL WENT UP
IN BERLIN.**

PROPERTY AND GARDEN MAINTENANCE

**PAINTING AND DECORATING
WALL AND FLOOR TILING
REPOINTING**

**FENCING AND SHED REPAIRS
GUTTERING AND PATIO CLEANING
GRASS AND HEDGES ETC CUT**

**RING BOB FURNELL 07561049432
01590 645313**

The Mill at Gordleton

Just 2 miles from Lymington a privately owned
beautiful riverside restaurant with rooms.

Lovely staff, gorgeous homemade local and
organic food (from light snacks to full A la Carte)

8 individual bedrooms with nothing bland
or minimilastic about the interior-mix of antiques,
warm rugs, modern art contemporary pictures,
real fires and thee acres of rambling gardens

Les Routiers 'Boutique Hotel of the Year' 2012
Trip Advisor Certificate of excellence 2012
Tourism South East 'Flavour of the South East 2012 Award'
'The Brilliance in Business Sustainable Business Award 2012'

The Mill at Gordleton

Silver Street (between Lymington & Hordle) Hants SO41 6DJ
Tel : 01590 682219 E mail: info @the millatgordleton.co.uk
www.themillatgordleton.co.uk



Everton Post Office & Village Stores

I can't believe that its newsletter time again, the seasons seem to change so quickly these days. Christmas has come and gone and we're all looking forward to the summer now - fingers crossed it's a nice warm one.

Now folks, what do you think this means?



If you said Party in the Park 2013 then you would be dead right as Cheryl and I have been busy during the dark and dismal days of January organising another Party in the Park. We're following last year's fifties theme with the swinging sixties which I'm sure most of us will relate to.

Where were you when the news of Kennedy's assassination broke? Do you remember Martin Luther King, the Beatles, and Mary Quant? Who remembers watching the moon landing?

We've got Steve Adams and Out of the Woods again along with the Total Voice choir. There will be a beer tent and hog roast again - and don't worry the hog roast man will bring more hog - and this year you'll be able to get New Forest ice cream too. There will be plenty to keep the kids happy, all free of course, and this year a few more side stalls.

Oh and we also have Gills bottle stall and Gill has asked me to mention that any bottle, from Daddies sauce to Drambuie, is appreciated and donations can be handed in at the Post Office.

Once again we will be having a grand raffle with the top prize of £100, tickets will be on sale at the Post Office in the weeks leading up to the event and also on the day. Once again this isn't a fundraising event as such but the raffle is a way of raising money so that we can make it a fun day out for all to enjoy so can I urge you all to support the raffle and buy a ticket or two?

We could do with some helpers for things like selling raffle tickets, making bunting and supervising the bouncy castle amongst other things so if you are able to give a hand then please leave your details at the Post Office and we will get in touch closer to the time.

It will take place on the recreation ground on Monday 6th May and as there won't be another newsletter beforehand put the date in your diary, and dig out your best 60's gear. Hope to see you all there.

Sandra & Steven Burrows

A.C. Motor Services Ltd.

Units 8&9 Lea Green Farm, Christchurch Road
Downton, Lymington, SO41 0LA

MOT's & Repairs Class 4 & 7

Servicing all makes & models

01590 645 999

CLASSIC PRIVATE HIRE

Airports, Cruise terminals,
Eurostar, Mainline stations,
Hospitals, Business travel,
and long journeys.

**Ring Simon 07940 872240
01590 643260**

Simon Maycock

Owner operator N.F.D.C. Licensed

12 Firmount Close

Everton

Lymington Hampshire

Weather watch in Everton 2012



A Cablegram from the Rainman

To Editor Everton Newsletter:
 Rainman temporarily in southern
 Florida stop Understand Seminole
 Rain Dancer in permanent hiding Stop
 Rainman incandescently incensed Stop
 Currently searching Everglades for
 missing Dancer Stop Will probably get
 lost Stop Might not return Stop Sorry
 Stop
 Regards Rainman

In the last issue of The Everton Newsletter a reader raised this query: Is the Rainman submitting rainfall figures to the official "international weather data" statistics? Although flattered by the enquiry, we hasten to assure our readership that this is not the case. In fact the Rainman is surprised that his figures have never been challenged as to their veracity. Even though the rainfall is measured

on the most simple of instruments, he strives to ensure that the statistics collected are as accurate as possible.

Interestingly, the same reader stated that he and his wife moved to Everton just a few years ago and were particularly pleased "to see how dry the climate is here." Famous last words! Not only has our brave reader and his wife suffered (and hopefully survived) the second wettest summer since records began, they have also endured the sort of snow and ice bound conditions from which they hoped to escape! Falls of snow and severe sub zero temperatures are rarely experienced in the lanes and gardens of Everton.

However, the Rainman does take some responsibility for our diabolical rainfall. Readers may recall that he promised the Editor of the Newsletter that he would not seek a further interview with the Seminole Indian Rain Dancer who is blamed for our atrocious conditions. He was unable to keep his promise as we can see from the above cablegram.

For the record we can make an interesting comparison of the rainfall statistics for the nine months April to December 2011 when a mere 15¾ inches fell and April to December 2012 when we were drenched by 37¼ inches. We wish you all a long, fine and dry summer.

The Rainman

**1962. TELSTAR WENT
UP AND MARILYN'S CANDLE
BLEW OUT**



Milford Emporium

We buy old and interesting items
 Glass;porcelain;gold&silver;books;
 linen;militaria;small furniture.

Also ask about our E-Bay service

We can sell your unwanted items for you.

07530 154108

100,High Street, Milford on Sea

EVERTON RAMBLING CLUB

In this, the wettest year on record, the club has been very lucky with the weather on our walk days, only two of our scheduled walks have been cancelled. Although some walks have been a struggle against wind, rain and mud.

We have had a very good turn out with an average of sixteen and top figures in excess of twenty. This has been very encouraging for our walk leaders, it shows their efforts have not been wasted. For the uninitiated "their efforts" include planning each walk's route and walking it in the preceding days to check the current conditions are safe, prior to leading and being responsible for the walk on the day.

There are a few walks remaining on the current programme before we get to our A.G.M. which is to be held on 8th April.

On January 11th we held our Annual Luncheon at the South Lawn Hotel, which was attended by fifty eight members and friends.

The club's leaders are meeting on 5th February to thrash out the new programme, which will have about twenty four walks.

A get together evening for skittles is to be held on 13th March. Generally our walks are held on the first Tuesday and third Thursday of the month and usually in the New Forest area and are roughly five or six miles long and last about two to three hours.

If anybody would like to join the happy throng, please contact our secretary John Evans on 01590 642848 or me on 01590 644901.

Alan Paice.

EVERTON LADIES EVENING GROUP – LEGS

Our varied programme of speakers and events continues to attract a good number of ladies to our regular first Monday of the month evening meetings but we do have room for more, so ladies why not give us a try? We are an independent group who meet once a month at St Mary's Church Hall and enjoy a talk and socialising over a cup of coffee and, hopefully, the occasional good laugh too!

Monday April 15th (later than usual because of the Bank Holiday) will be our annual Fish and Chips Supper together with a Store-cupboard Bring & Buy. This will be an opportunity to raise funds for our chosen charity of the year Honeypot Young Carers. If you want to join us for Supper the cost will be £5 but please ring to book a place.

On **Monday 13th May** we are delighted to have Diana Marx, embroiderer extraordinaire, coming to talk to us and display her "Textiles Using the Past" - a not-to-be missed presentation. (Please note later date owing to another Bank Holiday).

On **Monday 3rd June** we will be visiting Beaulieu Abbey and enjoying an Afternoon Cream Tea. Tickets for this event will be available at our April and May meetings.

A poster advertising our meetings is displayed each month outside the Post Office or alternatively just ask a "local" walking down the street – chances are she will be a member – there are a lot of us around!

CARRIE KAYE (Secretary)

SANDY DAVIES (Chairlady)

01590 644252

01590 645599

EVERTON & LYMORE SOCIAL CLUB

Everton Social Club is part of the Village and provides many activities such as Snooker, Pool, Darts, and board games such as Crib and Dominoes. Sky Sport is also available to view any day of the week showing all kinds of sport.

There is a comfortable Lounge to have a quiet chat along with a drink (alcoholic or coffee) or attend one of our entertainment functions. We have a Friday Film Show usually the last Friday of the month shown in the Lounge Bar. A list of all the entertainment is provided on the Club Notice Board at the front of the building along with a Diary of monthly events including Wednesday and Sundayevening BINGO starting at 7.30pm..

The "Club" is also developing its own Web Site - registered but not developed at this time, (www.everton-social-club.co.uk).Included in the new Technology we now have free Wi-Fi ,logging-in details are obtainable from the Bar Staff.

LIST OF FORTHCOMING EVENTS:-

9th MARCH	DREAMS IN COLOUR(Group)
30th MARCH	To Be Arranged
APRIL	To Be Arranged
25th May	STARDUST (Group)
22nd JUNE	CAT & MOUSE (Male Duo)

Harry Simpkin (Treasurer)

1963.

JFK WAS SHOT. THE BEATLES WERE AT NUMBER ONE AND THE TARDIS BROKE DOWN

Everton & Lymore W.I.

Diary Dates

Meetings are held every third
Wednesday at 2.30pm at St. Mary's
Church Hall, Branwood Close

Craft Afternoons are held every 4th
Wednesday at 2.30 p.m.

March 20th: ***Romanovs to Revolution***
Jill Daniels

April 17th: ***Rights of Way***
Colin Piper

May 15th: ***Annual General Meeting***

Secretary—Mrs. Pat Day---01590
642519

Milford on Sea Bowls Club

Just down the road, on the sea front, is Milford on Sea Bowls Club, their home club for many Everton residents. The Club is recognised as having one of the finest greens in Hampshire and with approximately 120 members they play in various leagues and enjoy excellent bowling and social events. Whether experienced bowlers or beginners, men and women of any age are invited to apply for membership.

The Club is holding a Newcomers Coffee Morning on Wednesday 24th April from 10.30am for interested potential bowlers to come along and see what goes on and, weather permitting, try a bowl or two.

For further details contact the Honorary Secretary Peter Kaye on 01590 644252 or by email: peterkaye@f2s.com

1964

**CLAY KNOCKED OUT SONNY, WOMEN
WENT TOPLESS AND PLAYSCHOOL STARTED**

thesis
asset management

Straight-talking investment management

We like to keep the choice of core investment services simple but effective. It's how we meet your needs that makes all the difference.

If you would like to find out more about our approach, please call Giles, Henry or Jonathan on 01590 613 580 for an informal chat or email giles.marriage@thesis-plc.com

Thesis Asset Management
Solent House, Cannon Street,
Lymington SO41 9BR
Tel: +44 (0)1590 613 580

www.thesis-plc.com

Thesis Asset Management plc is authorised and regulated by the Financial Services Authority.



Practitioners of the Institute of Financial Planning



Thesis' personal investment portfolio is rated as having received a Gold Star Rating



Shortlisted for the Fund Manager of the Year Awards 2012

EVERTON POST OFFICE & VILLAGE STORES



1590 643055

FREE PARKING RIGHT OUTSIDE

- ❖ POST OFFICE SERVICES
- ❖ FRESH BREAD DELIVERED
- ❖ FRESH FRUIT & VEG
- ❖ EXTENSIVE RANGE OF GROCERIES
- ❖ GOOD SELECTION OF WINE & BEER@ BARGAIN PRICES



LONDIS...BEST VALUE LOCALLY

The Lowly Chef's Cookery Corner

Hello everyone,

I was speaking to the Editor a while ago and she asked me if I would do a cookery section for the newsletter and all you lovely residents of Everton so, as we didn't have a cookery section, I agreed. I'm not sure what I've let myself in for so I'll give it a go! Sally has told me that she has had some feedback from one of the customers who dared to try the Christmas cake recipe in the last edition of the newsletter and said it went down a treat with her family, so thank you for letting her know what you thought of it. She also asked me to remind you all that it is also a great 'T' cake recipe as well. I thought I'd give you another cake recipe to try, this time it's a lighter Sponge recipe and really easy to make, I hope you are all willing to give it a try.

Fruity Tray Bake

Pre-heat oven to Gas mark 4 (350°F) (180°C) – I find that 160° for about 45 minutes (but no longer than 55 minutes) in my fan oven is about the right temperature for this cake, but you may have to make it a few times to find the right temperature and cooking time for your oven.

A meat roasting tin approximately 11½ x 8½ inches and 2 inches deep (29cm x 21½cm x 4.5 cm deep) lined with non-stick baking parchment.

Ingredients

10oz (275g) Butter or Margarine (I use Stork Margarine)

10oz (275g) Caster Sugar

Almond Essence to your own taste (we like a bit of flavour with this so I've left it to you to decide how much you want to put in).

5 large eggs – beaten with the Almond Essence

12½oz (350g) Self-Raising Flour, sifted

8oz (225g) Dried Mixed Fruit

4oz (100g) Glacé Cherries- chopped, washed and dried

Topping

2oz (50g) Flaked Almonds

1½oz tablespoons Granulated Sugar

Method

Cream the Margarine and Sugar until pale and fluffy

Beat in the eggs a little at a time with a spoonful of flour

Gently fold in the rest of the flour

Stir in the Mixed Fruit and Cherries until thoroughly mixed

Spread evenly in the baking tin and sprinkle on the Flaked Almonds and granulated Sugar

Cook as above

When cool cut into 16 slices – 1 cut along the length and 8 cuts across the width

Don't worry if the fruit has sunk to the bottom of the cake – tell everyone it's a fruit layer cake!

The Lowly Chef

Everton's St. Mary's Church Social Committee



Once again our Autumn Bazaar

Held in the Church Hall was a great

success, as was the Christmas Shopping

Trip to Winchester in November. The out

door Carol Singing on the Post Office

forecourt was well attended with hot mulled wine and mince pies much enjoyed.

Our January visit to the Matinee Pantomime at the Regent Theatre was to see Cinderella, a lovely colourful show, which included a free ice cream!

Attendance at our February games afternoon in the Church hall was disappointingly low, but nonetheless, the small group enjoyed the afternoon with tea and cakes being served by the ladies of the Committee.

Saturday March 23rd is our quiz evening, starting in the hall at 7 p.m. This is always a popular event.

We hope to arrange a musical evening later in the year, so keep a look out for posters around the village which will have details of dates and times.

John Wigglesworth.



- carpets & rugs
- vinyl & wood
- estimating & fitting
- great choice
- help & advice
- ample parking

... your local

Carpet Store

CARPET & VINYL SPECIALIST

Leagreen Farm,
Christchurch Rd,
Downton,
Lymington SO41 0LA

info@localcarpetstore.co.uk

01590 643974

www.localcarpetstore.co.uk



¹¹ Hordle Voluntary Care Group

Covering Tiptoe, Hordle and Everton

0845 388 9063

Hordle Voluntary Care Group (HVCG) has been assisting people in the Tiptoe, Hordle and Everton area to attend their medical appointments since 1992.

The group is managed by a small committee and currently we have 11 volunteer drivers. All drivers have had a Criminal Record check, now known as the Disclosure and Barring Service (DBS). Drivers also have personal liability insurance whilst carrying out their HVCG duties.

Whilst we are an independent support group we receive advice and help from the Good Neighbour Support Service. This support includes the submission of the DBS forms, advising of any changes in legislation that may affect the way we operate and by providing the insurance cover. They also work with Hampshire County Council in helping with advertising to recruit volunteers.

In September 2010 we held a tea party for some of our clients and this was so successful it has become an annual event. The party in September 2012 was sponsored by one of our volunteers for which we were very grateful. The Tea Party is an opportunity for our clients to meet other users of the service as well as meeting members of the committee who are not volunteer drivers.

We have two social events for HVCG Volunteers a year when we are able to meet new volunteers and also talk about how we can improve the service we offer. One is an informal get together in a local venue, usually a pub, just after our annual General meeting which is normally held in March/April. This year the AGM is on 18 March 2013 and will be held in the Pavilion, Hordle Recreation Ground. We hope to have a speaker explaining the new NHS process that becomes effective from April 2013. The other event is a Christmas Lunch and for the last two years this has been held at the Old Tea Rooms and Restaurant, Burley where we have been very pleased with the quality of the lunch and the hospitality given by the staff.

We have been supporting Hordle Primary School with their 'Grandhordles' project which is encouraging older persons in the community to become involved with school activities such as assisting the young pupils with reading, cooking, etc. If anyone wishes to have details about how they can become involved they can contact the school on 01425 611657 and, if required, we will assist with transport when possible.

We are always pleased to receive enquires about becoming a volunteer and if anyone would like more information please contact Ian the Secretary on 01425 614174 or hordle.care@btinternet.com

Do you need to get to a medical appointment?

Hordle Voluntary Care Group would like to help you. We will pick you up from home, take you to your appointment and return you to your home afterwards. The volunteer will stay with you whilst waiting for your appointment and, if you wish, will accompany you to the consultation. We also provide transport for relatives to visit in-patients if they are unable to get to the hospital using public transport and to the 'bathing service' at the St John's Ambulance HQ on the Gordleton Industrial Estate.

All you need to do is call our Co-ordinator, Margaret, on 0845 388 9063. Please leave a message if she is not available to answer the phone and she will get back to you. Please give as much notice as possible as this is more likely to enable us to find a driver for you.

Ian Chislett-Bruce
Hon Secretary
Hordle Voluntary Care Group



Party in the Park

Everton Recreation Ground

12.30 onwards....Free entry

You'll have already seen the running order on our front cover, and soon there'll be posters and hand bills around the village, just in case you mislay this Newsletter! We are hoping that all the owners of Vintage vehicles will come out in force again so if you want to get the first glimpse then be at the Triangle around 12 for the set off! Toby Sears has kindly agreed to give us a brief talk about the vehicles as they arrive at the Recreation Ground, and then he'll be on hand to formally open the event for us. If you or anyone else you know has a vintage vehicle then please contact him. (see below)

As I've said, we've included a few other stalls and attractions this year, so there'll be plenty to look at during the afternoon. In particular for the children we have the Penalty Shoot Out, a Treasure Hunt, Hat making, a Bouncy Castle and Bowling for the Ham...plus there's all the exciting new play equipment on the Rec! Of course the 'grown ups' can do a lot of these things too, plus quizzes and a chance to get involved in the Art demonstrations too....We're not running any fancy dress competitions this year but we will be taking the chance to get into our Sixties gear again. So why don't you!!!(Any opportunity...)

GRAND RAFFLE

As Mrs P.O. said, the event is funded in the main by our Grand Raffle, there are some great prizes again so please support us as much as you are able...Raffle tickets will be on sale at the Village Shop soon, but you will be able to get them on the day itself too.

**IF YOU'D LIKE TO GET INVOLVED
IN HELPING ON THE DAY ITSELF
THEN PLEASE DON'T STAND BACK!**

**Hand your details in at the Post
Office please...**

Tents/Gazebos

**Do you have a medium sized
tent or gazebo that we could
borrow
for the afternoon...**

**Please let us, Sandra or
Cheryl at the PO know if you
can help...we do need a few
more this year...**

Thanks!

THE PARTY IN THE PARK

MONDAY MAY 6TH 2013

60s themed village event for all the family.



**Do you have an old vehicle or do
you know someone who does!?**

We need classic/vintage cars/motorcycles for a display at the recreation ground for this years party in the park. If you have a suitable vehicle and can support the event I would like to know in order to ensure there is enough space for the cars once they arrive and to help us plan. Cars are required from 12.00 and I would ask you to leave the car in place until 4.30.

If you can bring your vehicle or you know someone who can, please let me know as I would like some details and will need to let you know the final arrangements.

Toby Sears, 46 Wainsford Rd, tel. 644269 or 07790 533619